

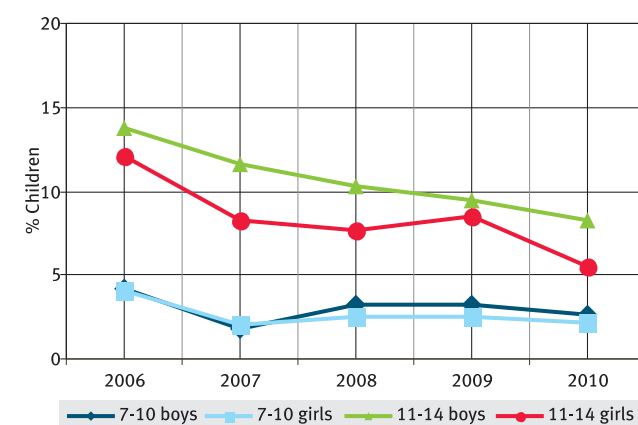
SCHOOL ENROLLMENT AND OUT OF SCHOOL CHILDREN

TABLE 1: % CHILDREN IN DIFFERENT TYPES OF SCHOOLS 2010

Age group	Govt.	Pvt.	Other	Not in School	Total
AGE: 6-14 ALL	87.3	5.9	2.3	4.6	100
AGE: 7-16 ALL	85.6	4.3	2.3	7.8	100
AGE: 7-10 ALL	87.6	8.1	1.9	2.4	100
AGE: 7-10 BOYS	87.4	8.1	1.9	2.6	100
AGE: 7-10 GIRLS	87.8	8.2	1.9	2.1	100
AGE: 11-14 ALL	88.3	1.9	3.0	6.9	100
AGE: 11-14 BOYS	86.8	2.0	2.9	8.3	100
AGE: 11-14 GIRLS	89.8	1.7	3.1	5.5	100
AGE: 15-16 ALL	75.4	0.9	2.0	21.7	100
AGE: 15-16 BOYS	72.4	0.6	1.6	25.4	100
AGE: 15-16 GIRLS	78.8	1.2	2.5	17.5	100

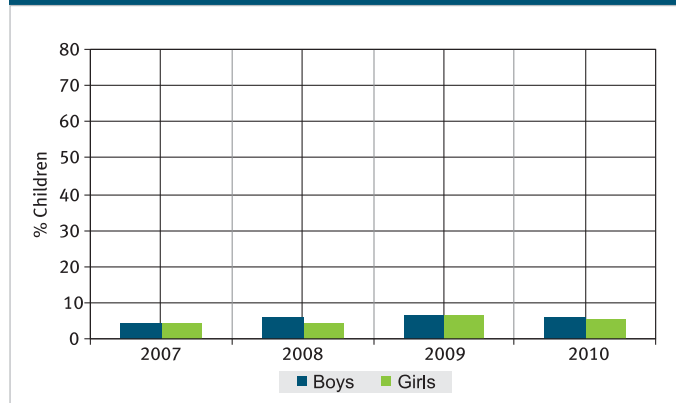
NOTE: 'OTHER' includes children going to madarssa and EGS.
 'NOT IN SCHOOL' = dropped out + never enrolled.

**CHART 1: TRENDS OVER TIME
 % CHILDREN OUT OF SCHOOL BY AGE GROUP AND GENDER 2006-2010**



How to read this chart: For example, the proportion of girls (age 11-14) not in school has changed from 12.1% in 2006 to 8.3% in 2007 to 7.7% in 2008, 8.5% in 2009 and to 5.5% in 2010.

**CHART 2: TRENDS OVER TIME
 % BOYS AND GIRLS AGE 6-14 ENROLLED IN PVT SCHOOL 2007-2010**



How to read this chart: In 2010, 6.2% of all boys (age 6-14) were enrolled in private school and 5.6% of all girls (age 6-14) were enrolled in private school.

**TABLE 2: SAMPLE DESCRIPTION
 % CHILDREN IN EACH CLASS BY AGE 2010**

Std.	5	6	7	8	9	10	11	12	13	14	15	16	Total
I	24.7	41.3	19.6	8.4	2.7				3.2				100
II	4.0	13.0	38.3	27.5	8.4	5.2			3.6				100
III		3.5	13.7	35.6	26.0	13.8			7.5				100
IV		3.2		14.7	28.1	35.1	7.8	6.5		4.6			100
V			3.0		6.7	36.6	25.8	17.1	5.2	3.5	2.1		100
VI				1.9		10.1	26.2	36.4	14.5	7.4	3.4		100
VII				0.9		2.7	6.1	35.9	30.8	15.5	5.4	2.7	100
VIII					2.2			11.5	28.7	34.0	14.8	8.7	100

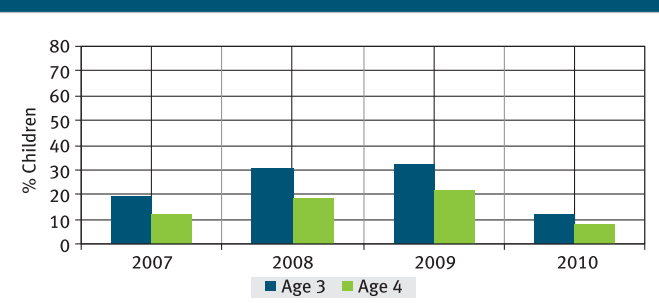
How to read this table: If a child started school in Std I at age 6, she should be age 8 in Std 3. This table shows the age distribution for each class. For example, in Std III, 35.6% children are 8 years old but there are also 13.7% who are 7, 26% who are 9, 13.8% who are 10 years old, etc.

YOUNG CHILDREN IN PRE-SCHOOL AND SCHOOL

TABLE 3: % CHILDREN AGE 3-6 WHO ATTEND DIFFERENT TYPES OF PRE-SCHOOL & SCHOOL 2010

	In balwadi or anganwadi	In LKG/UKG	In School			Not going anywhere	Total
			Govt	Pvt	Other		
AGE 3	83.9	3.9				12.2	100
AGE 4	80.6	11.6				7.8	100
AGE 5	29.8	2.1	45.4	11.8	1.6	9.4	100
AGE 6	6.1	1.8	73.2	12.5	1.0	5.3	100

**CHART 3: TRENDS OVER TIME
 % CHILDREN AGE 3-4 NOT ATTENDING ANYWHERE 2007-2010**



In 2010, 92.1% of sampled villages reported having an anganwadi in the village.
How to read this chart: For example, in 2010, 12.2% of all age 3 children were not attending any kind of preschool or school.

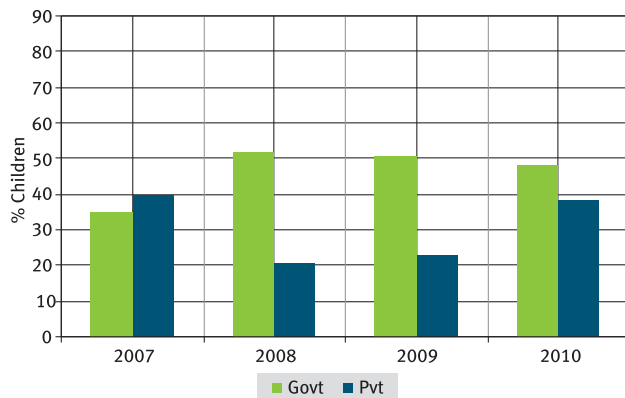
READING IN OWN LANGUAGE

TABLE 4: CLASS-WISE % CHILDREN BY READING LEVEL ALL SCHOOLS 2010

Std.	Nothing	Letter	Word	Level 1 (Std 1 Text)	Level 2 (Std 2 Text)	Total
I	18.9	46.1	22.5	7.2	5.3	100
II	7.2	30.4	31.2	19.3	12.0	100
III	3.8	19.2	24.8	26.9	25.4	100
IV	1.2	9.4	18.2	30.8	40.4	100
V	0.4	6.2	11.7	28.0	53.9	100
VI	0.7	3.6	7.4	21.9	66.5	100
VII	0.2	2.2	5.4	16.4	75.8	100
VIII	0.2	1.4	2.1	13.3	83.0	100
TOTAL	4.5	15.9	16.2	20.7	42.8	100

How to read this table: Each cell shows the highest level of reading achieved by a child. For example, in Std III, 3.8% children cannot even read letters, 19.2% can read letters but not more, 24.8% can read words but not Std 1 text or higher, 26.9% can read Std 1 text but not Std 2 level text, and 25.4% can read Std 2 level text. For each class, the total of all these exclusive categories is 100%.

**CHART 4: TRENDS OVER TIME
% CHILDREN IN Std III WHO CANNOT READ Std I LEVEL TEXT BY SCHOOL TYPE 2007-2010**



READING TOOL

ভাষা মূল্যায়ন-৪

কাহিনী

ছুটির দিনে খুব মজা হয়। পড়া থাকে না। লেখা থাকে না। বাবার বকুনি থাকে না। শুধু খেলা আর খেলা। পানের বাড়ির তাতাই, বাবাই ও আমি খেলা করি। কখনো ব্যাট-বল খেলি, কখনো চোর-পুলিশ। কখনো মায়ের চোখ ঘঁকি দিয়ে সীমার সাথে লুডো খেলা। এবারের ছুটি শেষ তাই খুব মন খারাপ। পনের বারের ছুটিতে দীঘা বেড়াতে যাবো। বড়মানা এসে আমাদের নিয়ে যাবে বলেছে।

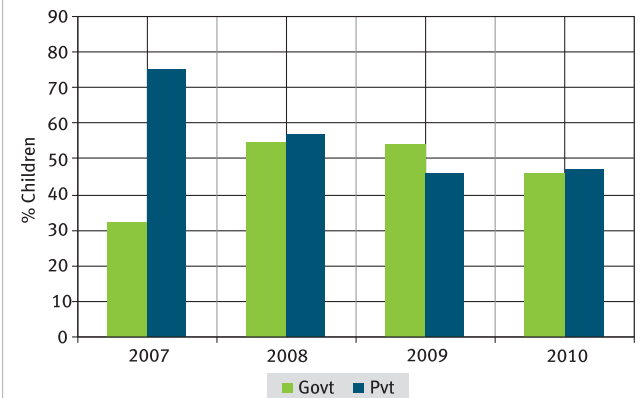
অনুচ্ছেদ

আমাদের দেশে অনেক নদী। ছোট বড়ো কতো অনাশয়। যেখানেই জল সেখানেই মাছ। অনাশয়ে মাছ চাম করা হয়।

পুঁথি মনে একটি পুঁথি মনে পড়তে হয়।

ছ	ম	ব	ভোর	হাঁস
জ	ল	স	মাসি	রমা
ক	ন	স	জাম	ডেল
দ	ট		নদী	মূল
			পাতা	পূজা

**CHART 5: TRENDS OVER TIME
% CHILDREN IN Std V WHO CANNOT READ Std II LEVEL TEXT BY SCHOOL TYPE 2007-2010**



TUITION

TABLE 5: CLASS-WISE % CHILDREN ATTENDING PAID TUITION CLASSES BY SCHOOL TYPE 2007, 2009 AND 2010

Year	School	I	II	III	IV	V	VI	VII	VIII
2007	GOVT	30.6	45.6	63.0	74.0	83.3	84.9	83.7	88.5
	PVT	40.5	54.9	59.5	67.0	62.7	68.6	75.6	89.7
2009	GOVT	51.5	63.9	68.7	74.2	75.6	80.8	85.7	86.6
	PVT	63.9	71.4	74.4	83.6	87.7	79.2	78.9	71.2
2010	GOVT	50.6	63.9	69.8	68.6	75.6	76.1	80.1	83.1
	PVT	60.7	73.1	65.0	65.1	65.4	61.3	75.4	72.9

NOTE: In 2007, 2009 and 2010 the ASER survey recorded information about tuition. In all 3 years, the question asked was the following: "Does the child take any paid additional class currently?" Therefore, these numbers do not include any supplemental help in learning that children may have received from parents, siblings or from anyone else who did not require payment.



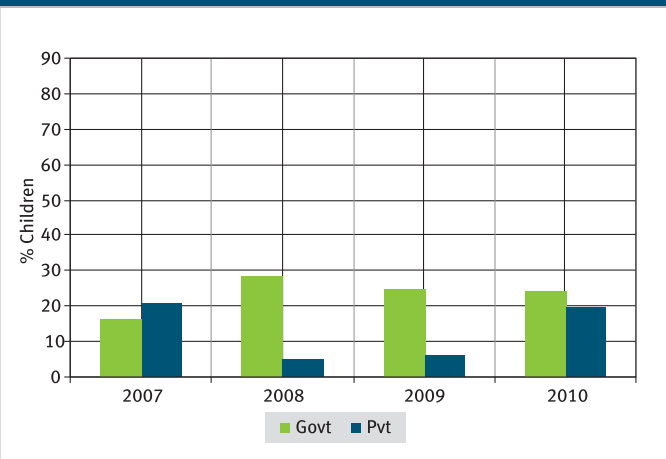
ARITHMETIC

TABLE 6: CLASS-WISE % CHILDREN BY ARITHMETIC LEVEL ALL SCHOOLS 2010

Std.	Nothing	Recognize Numbers		Subtract	Divide	Total
		1-9	11-99			
I	19.6	47.4	21.8	9.0	2.1	100
II	6.2	32.8	34.4	20.5	6.1	100
III	2.4	21.4	30.2	31.4	14.8	100
IV	1.7	10.7	24.6	34.1	28.8	100
V	0.7	7.3	20.1	34.2	37.7	100
VI	0.5	2.2	13.5	32.9	50.9	100
VII	0.2	2.0	13.2	24.7	59.9	100
VIII	0.7	1.0	11.4	19.2	67.7	100
TOTAL	4.3	16.6	21.7	25.8	31.6	100

How to read this table: Each cell shows the highest level of arithmetic achieved by a child. For example, in Std 3, 2.4% children cannot even recognize numbers 1-9, 21.4% can recognize numbers up to 10 but not more, 30.2% can recognize numbers upto 100 but cannot do subtraction, 31.4% can do subtraction but not division, and 14.8% can do division. For each class, the total of all these exclusive categories is 100%.

**CHART 6: TRENDS OVER TIME
 % CHILDREN IN Std III WHO CANNOT RECOGNISE NUMBERS UPTO 100 BY SCHOOL TYPE 2007-2010**



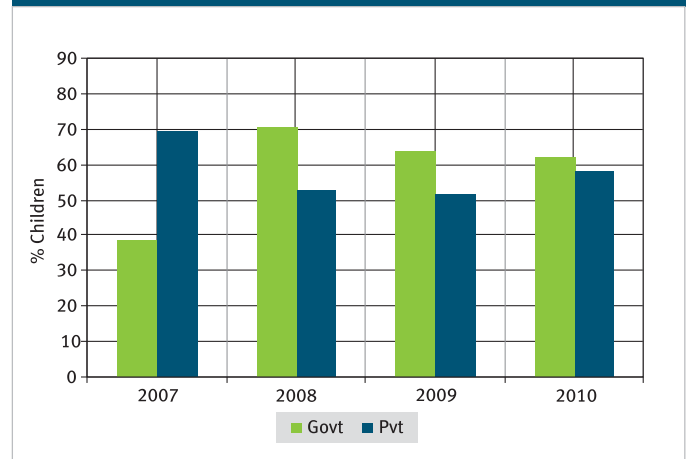
MATH TOOL

गणित (नमूना-१)

कक्षा - पहिली (१-२)	कक्षा - दुसरी (२-३)	विभाग	वर्ग			
७	९	७६	७७	६२	९७	७)३१३(
		- २४	- ४९			
३	४	३२	२७	४८	९६	९)४७३(
		- २३	- ७९			
८	९	४९	९२	४७	७३	६)६४७(
		- ७७	- ३६			
६	२	६७	८९	७६	२७	७)६१३(
		- ३८	- ३४			

पहिली विभागात घटायला, अर्धी नवीक करावयाची आहे।
 दुसरी विभागात घटायला, अर्धी नवीक करावयाची आहे।
 ४४ व ४७ या दोन्ही विभागात घटायला, अर्धी नवीक करावयाची आहे।
 ४७ व ७३ या दोन्ही विभागात घटायला, अर्धी नवीक करावयाची आहे।

**CHART 7: TRENDS OVER TIME
 % CHILDREN IN Std V WHO CANNOT DO DIVISION BY SCHOOL TYPE 2007-2010**



CRITICAL THINKING AND EVERYDAY CALCULATIONS

TABLE 7: CLASSWISE % CHILDREN IN Std V-VIII ABLE TO ANSWER QUESTIONS IN EVERYDAY MATH. ALL SCHOOLS 2010

Std.	Menu			Calendar			Area			Estimation		
	Neither	One	Both	Neither	One	Both	Neither	One	Both	Neither	One	Both
V	37.1	23.2	39.7	56.1	17.1	26.8	79.0	7.7	13.4	59.6	12.4	28.0
VI	30.6	20.5	48.9	44.5	17.6	38.0	68.3	10.2	21.5	50.2	14.0	35.8
VII	24.8	25.1	50.1	36.6	20.1	43.4	62.8	11.1	26.2	45.4	14.9	39.7
VIII	20.9	20.3	58.8	30.2	19.4	50.4	55.7	12.8	31.5	41.8	13.3	44.9

NOTE: Children enrolled in school in Std V and above were given 4 tasks related to everyday calculations. For each task, children were asked two questions.

EVERYDAY MATH TOOL

दुकानपुढी **BONUS TOOL** **वाढणारा**

बोनस अंका करा

दुकानपुढी						
४१	-	४	४१			
वाढणारा	-	२०	४१			
शिफ्टी	-	४	४१			
शिफ्टी	-	३६	४१			
वाढणारा	-	४	४१			

दुकानपुढी व वाढणारा या दोन्ही टाक्यातही अंकांची जागा भरून घ्यावी. अंकांची जागा भरून घ्यावी. अंकांची जागा भरून घ्यावी. अंकांची जागा भरून घ्यावी.

वाढणारा						
१	२	३	४	५	६	७
८	९	१०	११	१२	१३	१४
१५	१६	१७	१८	१९	२०	२१
२२	२३	२४	२५	२६	२७	२८

दुकानपुढी व वाढणारा या दोन्ही टाक्यातही अंकांची जागा भरून घ्यावी. अंकांची जागा भरून घ्यावी. अंकांची जागा भरून घ्यावी. अंकांची जागा भरून घ्यावी.

1) ४१ व २० या अंकांची जागा भरून घ्यावी. ४१ व २० या अंकांची जागा भरून घ्यावी. ४१ व २० या अंकांची जागा भरून घ्यावी. ४१ व २० या अंकांची जागा भरून घ्यावी.
 2) ४१ व ३६ या अंकांची जागा भरून घ्यावी. ४१ व ३६ या अंकांची जागा भरून घ्यावी. ४१ व ३६ या अंकांची जागा भरून घ्यावी. ४१ व ३६ या अंकांची जागा भरून घ्यावी.
 3) ४१ व ४ या अंकांची जागा भरून घ्यावी. ४१ व ४ या अंकांची जागा भरून घ्यावी. ४१ व ४ या अंकांची जागा भरून घ्यावी. ४१ व ४ या अंकांची जागा भरून घ्यावी.
 4) ४१ व ३६ या अंकांची जागा भरून घ्यावी. ४१ व ३६ या अंकांची जागा भरून घ्यावी. ४१ व ३६ या अंकांची जागा भरून घ्यावी. ४१ व ३६ या अंकांची जागा भरून घ्यावी.

PERFORMANCE OF DISTRICTS

TABLE 8 District Name	Anganwadi or balwadi	Out of school	Private school	Tuition	Std I-II : Learning levels		Std III-V : Learning levels		Std V-VIII : Everyday calculations			
	% Children (Age 3-4) in anganwadi or pre-school	% Children (Age: 6-14) out of school	% Children (Age: 6-14) in private school	% Children (Std IV-VIII) attending paid tuition classes	% Children (Std I-II) who CAN READ letters or more	% Children (Std I-II) who CAN RECOGNIZE NUMBERS 1 to 9 or more	% Children (Std III-V) who CAN READ Level 1 (Std 1 Text) or more	% Children (Std III-V) who CAN DO SUBTRACTION or more	% Children answering both questions correctly	% Children answering both questions correctly	% Children answering both questions correctly	% Children answering both questions correctly
									Menu	Calendar	Area	Estimation
Bankura	99.0	5.8	2.2	67.1	89.1	88.8	73.0	59.9	47.9	30.6	21.9	38.6
Bardhaman	100.0	3.8	3.4	87.5	89.0	87.3	69.6	67.1	62.0	48.6	35.5	47.4
Birbhum	96.9	6.5	3.5	65.3	80.7	86.1	48.5	41.7	57.6	40.6	18.8	27.9
Dakshin Dinajpur	98.2	4.5	7.6	68.1	92.3	91.7	63.0	62.2	47.7	29.5	25.0	35.0
Darjiling	63.8	0.9	31.3	49.6	99.2	100.0	66.7	67.6	59.6	45.2	15.2	22.1
Haora	98.5	4.4	4.4	90.3	92.5	95.2	71.6	62.0	56.7	48.8	21.4	41.6
Hugli	94.9	3.1	4.3	90.6	96.8	95.7	91.3	79.9	57.1	46.6	28.4	48.0
Jalpaiguri	75.5	3.7	8.7	62.4	79.8	79.5	48.5	30.7	32.2	27.7	19.0	27.9
KochBihar*		2.8	3.7	76.5	77.3	86.7	58.8	49.1	37.0	23.5	14.4	25.2
Maldah	90.5	6.9	14.0	64.9	77.5	74.8	55.0	46.9	41.1	30.0	18.7	24.0
Medinipur	96.9	1.8	4.1	85.5	97.6	96.9	86.3	81.0	48.2	50.2	29.3	39.0
Murshidabad	73.3	6.3	4.3	73.3	86.1	81.7	63.0	56.6	59.9	38.3	17.5	31.8
Nadia	89.3	4.5	1.3	86.2	89.7	88.3	70.5	40.8	25.2	16.3	10.4	27.3
North 24 Parganas	97.7	3.2	6.2	82.5	94.2	94.2	56.3	51.5	55.4	43.4	28.1	51.2
Puruliya	95.8	6.8	3.4	40.5	71.2	75.1	59.6	62.9	49.1	26.3	8.5	12.5
South 24 Parganas	93.5	3.8	6.5	84.7	88.4	87.5	80.7	61.8	35.3	34.3	18.0	48.3
Uttar Dinajpur	37.3	11.4	7.7	56.0	66.4	71.0	48.8	43.7	46.2	32.7	17.8	38.9
Total	90.1	4.6	5.9	76.0	86.6	86.8	68.5	60.4	49.1	39.3	22.9	36.9

* Blank cells indicate insufficient data.

AS PART OF ASER 2007, 2009 AND 2010, IN EACH SAMPLED VILLAGE, ONE GOVERNMENT SCHOOL WITH PRIMARY SECTIONS WAS VISITED ON THE DAY OF THE SURVEY. THE SCHOOL INFORMATION IS BASED ON THIS VISIT.

SCHOOL OBSERVATIONS

TABLE 9: TOTAL SCHOOLS VISITED

	2007	2009	2010
TYPE OF SCHOOL			
Std I-IV/V : PRIMARY	395	417	406
Std I-VII/VIII: PRIMARY + UPPER PRIMARY	9	7	2
TOTAL SCHOOLS VISITED	404	424	408

TABLE 10: TEACHER ATTENDANCE

	2007	2009	2010	2007	2009	2010
TYPE OF SCHOOL	Std I-IV/V			Std I-VII/VIII		
% TEACHERS PRESENT (AVERAGE)	90.6	87.7	85.6	73.1	82.2	91.1
% SCHOOLS WITH NO TEACHER PRESENT	0.0	0.3	0.0	0.0	0.0	0.0
% SCHOOLS WITH ALL TEACHERS PRESENT	71.4	68.4	58.4	60.0	0.0	50.0

TABLE 11: HEADTEACHERS 2010

	Std I-IV/V	Std I-VII/VIII
NO HEADTEACHER APPOINTED	1.1	0.0
HEADTEACHER APPOINTED BUT NOT PRESENT ON DAY OF VISIT	4.7	0.0
HEADTEACHER APPOINTED & PRESENT ON DAY OF VISIT	94.2	100.0
TOTAL	100.0	100.0

TABLE 12: STUDENT ATTENDANCE

	2007	2009	2010	2007	2009	2010
TYPE OF SCHOOL	Std I-IV/V			Std I-VII/VIII		
% ENROLLED CHILDREN PRESENT (AVERAGE)	69.7	65.8	68.5	73.0	70.0	65.8
% SCHOOLS WITH LESS THAN 50% ENROLLED CHILDREN PRESENT	14.7	20.9	15.8	12.5	14.3	50.0
% SCHOOLS WITH 75% OR MORE ENROLLED CHILDREN PRESENT	50.7	39.8	45.7	62.5	28.6	50.0

TABLE 13: COMPUTERS 2010

% SCHOOLS WITH	Std I-IV/V	Std I-VII/VIII
NO COMPUTERS	99.0	50.0
COMPUTERS BUT NO CHILDREN USING THEM AT TIME OF VISIT	0.5	50.0
COMPUTERS AND CHILDREN USING THEM AT TIME OF VISIT	0.5	0.0
TOTAL	100.0	100.0

TABLE 14: MULTIGRADE CLASSES

	2007	2009	2010	2007	2009	2010
% SCHOOLS IN WHICH	Std I-IV/V			Std I-VII/VIII		
Std II CHILDREN SITTING WITH ONE OR MORE OTHER CLASSES	36.7	46.6	42.6	22.2	14.3	0.0
Std IV CHILDREN SITTING WITH ONE OR MORE OTHER CLASSES	24.6	38.7	33.8	11.1	14.3	0.0

SCHOOL GRANTS

TABLE 15: SSA SCHOOL GRANTS RECEIVED IN FIRST HALF OF FINANCIAL YEAR 2009-10 AND IN THE FULL FINANCIAL YEAR 2009-2010. PRIMARY SCHOOLS ONLY

SSA school grants to government primary schools only	April 2009-October 2009			April 2009-March 2010				
	No. of schools	% Schools reporting grant information			No. of schools	% Schools reporting grant information		
		Got grant	Did not get grant	Don't know		Got grant	Did not get grant	Don't know
MAINTENANCE GRANT	327	39.5	53.8	6.7	376	80.3	10.6	9.0
DEVELOPMENT GRANT	325	30.8	61.9	7.4	363	73.6	17.4	9.1
TEACHER GRANT (TLM)	323	45.2	50.2	4.6	374	85.3	8.6	6.2

TABLE 16: SSA SCHOOL GRANTS RECEIVED IN FULL FINANCIAL YEAR 2008-2009 AND FULL FINANCIAL YEAR 2009-2010. PRIMARY SCHOOLS ONLY

SSA school grants to government primary schools only	April 2008-March 2009			April 2009-March 2010				
	No. of schools	% Schools reporting grant information			No. of schools	% Schools reporting grant information		
		Got grant	Did not get grant	Don't know		Got grant	Did not get grant	Don't know
MAINTENANCE GRANT	385	70.4	23.9	5.7	376	80.3	10.6	9.0
DEVELOPMENT GRANT	366	59.8	34.4	5.7	363	73.6	17.4	9.1
TEACHER GRANT (TLM)	376	75.0	20.7	4.3	374	85.3	8.6	6.2

NOTE: Table 15 compares grants received in the first half of the financial year (from April to October 2009) with grants received through the full financial year (from April 2009 to March 2010). Table 16 compares fund flows to schools across two full financial years. This table tracks fund flows to schools over time. Data reported is only for Primary schools. Data on Primary and Upper Primary Schools will be made available in the forthcoming PAISA 2010 report.

RIGHT TO EDUCATION INDICATORS

TABLE 17: SCHOOLS BY ENROLLMENT 2010

School enrollment	Number of schools	% of schools
1-60	40	10.1
61-90	68	17.2
91-120	74	18.7
> 120	213	53.9
TOTAL	395	100.0

How to read this table: For example, RTE norms state that a school with enrollment of 61-90 students should have 3 teachers. This table shows that for schools in this category, 16.1% of schools are at norm (i.e. have 3 teachers), 69.6% are below the norm and 14.3% are above the norm.

TABLE 18: PUPIL TO TEACHER RATIO COMPARED TO RTE NORMS 2010

School enrollment	Number of teachers							Total
	1	2	3	4	5	6	≥7	
1-60	25.8	32.3			41.9			100
61-90		69.6	16.1		14.3			100
91-120			77.5	15.5		7.0		100
> 120			63.2		17.1	19.7		100

As part of ASER 2010, in each sampled village, one government school with primary sections was visited on the day of the survey. During this school visit, RTE indicators were observed and are reported here.

Extracts from the Schedule of The Right of Children to Free and Compulsory Education Act 2009 Norms and standards for a School (Sections 19 and 25)

NUMBER OF TEACHERS IN Std 1-5:

♦ Admitted children	No. of teachers
≤ 60	2
61-90	3
91-120	4
121-200	5
> 150	5 + 1 Headteacher
> 200	Pupil-Teacher Ratio (excluding Headteacher) shall not exceed 40

SCHOOL FACILITIES:

All weather building with:

- ♦ At least one classroom for every teacher
- ♦ Office cum store cum headteacher's room
- ♦ Separate toilets for boys and girls
- ♦ Safe and adequate drinking water facility to all children
- ♦ A kitchen where mid-day meal is cooked in the school
- ♦ Playground
- ♦ Arrangements for securing the school building by boundary wall or fencing.

TEACHING LEARNING EQUIPMENT

shall be provided to each class as required.

LIBRARY

There shall be a library in each school providing newspaper, magazines and books on all subjects, including story-books.

TABLE 19: SCHOOLS BY NUMBER OF TEACHERS 2010

Number of teachers	Number of schools	% of schools
1	20	5.7
2	83	23.7
3	92	26.3
4	79	22.6
5	36	10.3
6	25	7.1
≥7	15	4.3
TOTAL	350	100.0

How to read this table: RTE norms indicate that there should be one classroom for every teacher. This table shows, for example, that for schools with 3 teachers, 21.8% of schools are at norm (i.e. have 3 classrooms), 25.6% are below the norm and 52.6% are above the norm.

TABLE 20: TEACHER TO CLASSROOM RATIO COMPARED TO RTE NORMS 2010

Number of Teachers	Number of classrooms							Total	
	0	1	2	3	4	5	6		≥7
1	0.0	6.3			93.8				100
2		6.9	20.8		72.2				100
3			25.6	21.8		52.6			100
4				37.1	54.8		8.1		100
5					86.7	10.0	3.3		100
6						95.0	5.0	0.0	100
≥7								75.0	100

TABLE 21: FACILITIES COMPARED TO RTE NORMS 2010

% of schools with		
BUILDING	Office/Store/Office cum store	79.3
	Playground	42.0
	Boundary wall	34.1
DRINKING WATER	No facility for drinking water	19.3
	Facility but no drinking water available	13.5
TOILET	Drinking water available	67.2
	No toilet facility	7.6
	Facility but toilet not useable	36.3
GIRLS TOILET	Toilet useable	56.2
	% Schools with no separate provision for girls toilets	44.5
	Of schools with separate girls toilets, % schools where	
	Toilet locked	15.5
TLM	Toilet not useable	13.6
	Toilet useable	26.5
	Teaching learning material in Std 2	71.7
LIBRARY	Teaching learning material in Std 4	65.3
	No library	50.5
	Library but no books being used by children on day of visit	17.8
MDM	Library books being used by children on day of visit	31.8
	Kitchen shed for cooking midday meal	86.0
	Midday meal served in school on day of visit	63.0

NOTE: School observations for ASER 2010 looked at TLM for Std II and Std IV only.

