

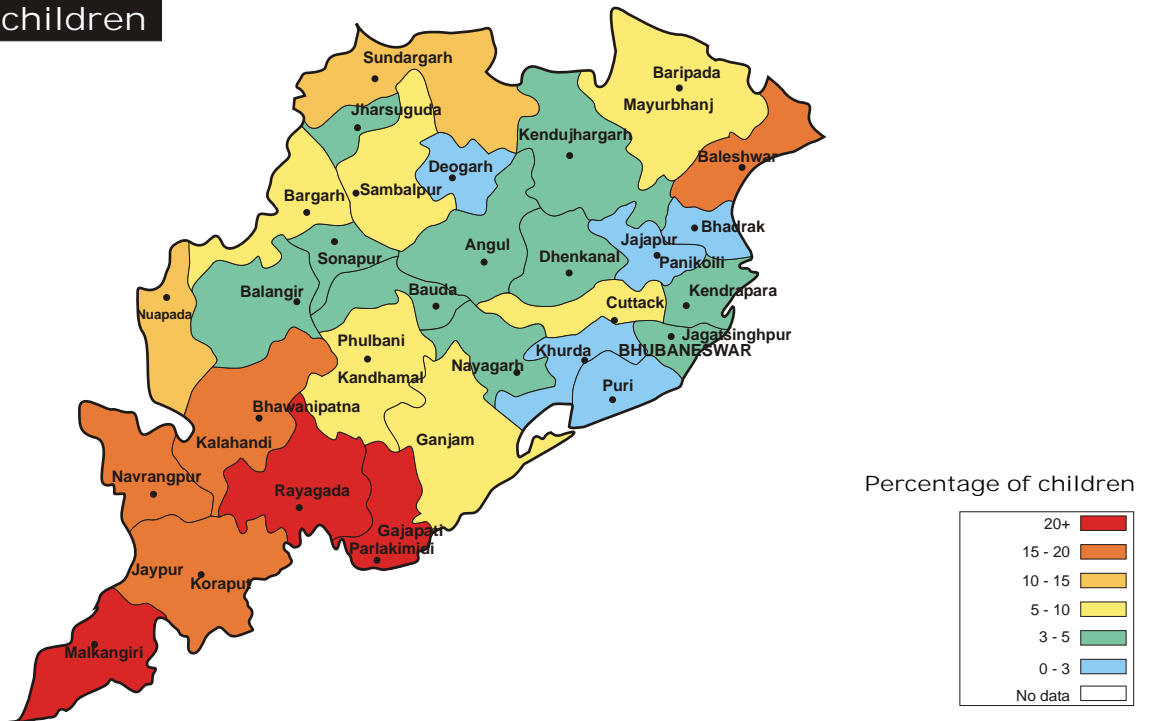
ORISSA RURAL

All analyses based on data from 30 out of 30 districts

Enrollment

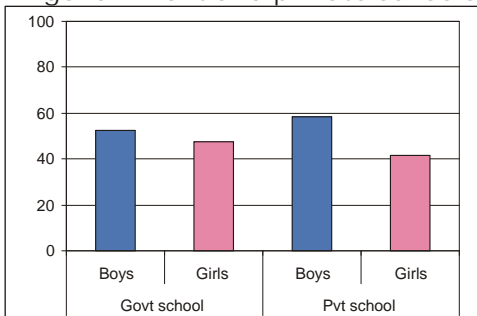
	% Children in different types of schools				% Children not in school		Total
	Government	Private	Madarsa	EGS	Never Enrolled	Drop Out	
Age : 6-14 ALL	85.0	3.5	0.1	2.5	4.6	4.2	100
Age : 6-10 ALL	88.9	2.5	0.1	3.4	3.7	1.4	100
Age : 11-14 ALL	78.9	5.1	0.1	1.2	6.1	8.7	100
Age : 6-10 BOYS	89.2	3.1	0.1	3.2	3.4	1.1	100
Age : 6-10 GIRLS	88.7	2.0	0.1	3.6	3.9	1.8	100
Age : 11-14 BOYS	80.2	5.4	0.1	1.1	5.2	8.0	100
Age : 11-14 GIRLS	77.4	4.9	0.0	1.3	7.1	9.4	100

Out-of-school children

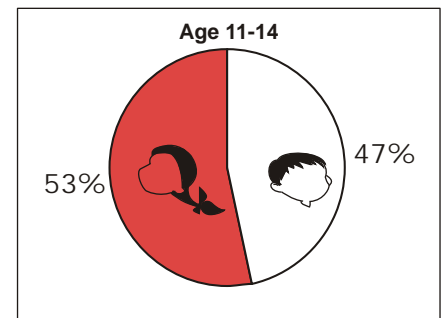
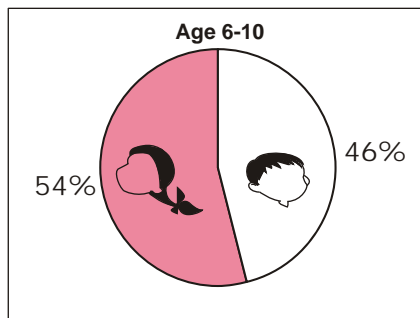


Gender differences

Percentage of boys and girls in government and private schools



Out-of-school children: Proportion of girls and boys.



Learning

	% Children who CANNOT read ...		% Children who CANNOT solve numerical written sums of ...	
	Level 1*	Level 2**	Subtraction or Division	Division
Age : 7-14 ALL	36.8	51.8	47.2	72.6
Age : 7-10 ALL	50.6	67.9	60.7	86.6
Age : 11-14 ALL	17.9	29.8	28.8	53.4
Govt : Std II-V	46.6	65.3	57.2	85.1
Pvt : Std II-V	28.9	49.2	30.6	69.8
Govt : Std VI-VIII	8.5	19.3	20.2	47.9
Pvt : Std VI-VIII	7.8	19.7	21.1	42.7

* Level - 1: Ability to read a small paragraph with short sentences of std 1 level difficulty.

**Level - 2: Ability to read a 'story' text with some long sentences of std 2 level difficulty.

Subtraction:
2 digit subtraction with borrowing.

Division:
3 digit divided by 1 digit.

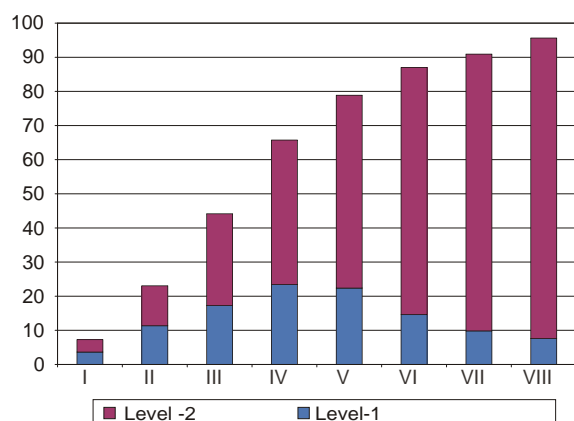
Learning curves

Children who CAN read and solve numerical written sums

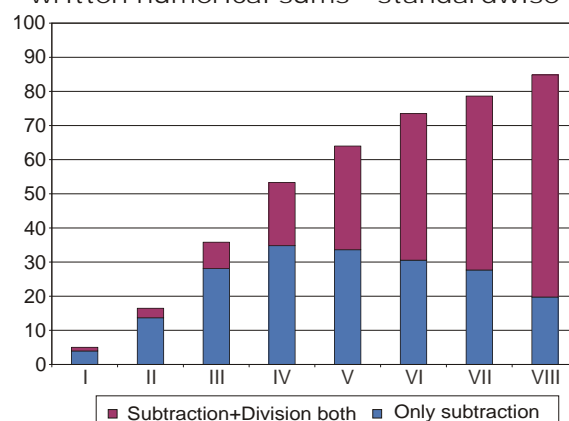
Reading

Arithmetic

% All school children who can read-standardwise



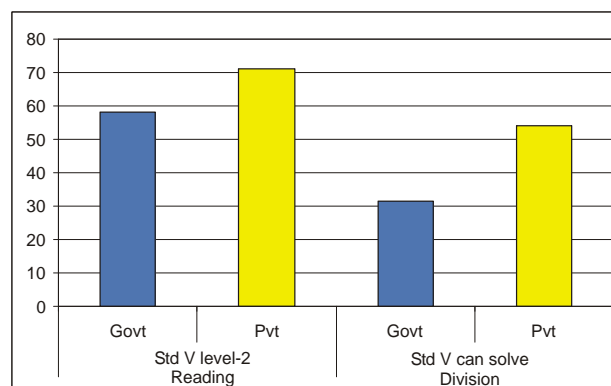
% All school children who can solve written numerical sums - standardwise



Performance of top five and bottom five districts in state based on % all children Std V

Reading	% Std V CANNOT read level-2	Arithmetic	% Std V CANNOT solve division
Top - 5		Top - 5	
Khordha	21.8	Khordha	44.2
Puri	22.9	Baleswar	48.0
Baudh	26.1	Kandhamal	54.9
Mayurbhanj	27.9	Jagatsinghapur	57.1
Jagatsinghapur	28.1	Mayurbhanj	58.1
Bottom - 5		Bottom - 5	
Nabarangapur	71.6	Rayagada	93.8
Rayagada	65.2	Balangir	90.6
Anugul	62.9	Nuapada	89.8
Sonapur	57.0	Sonapur	86.0
Sundargarh	53.6	Baudh	82.8

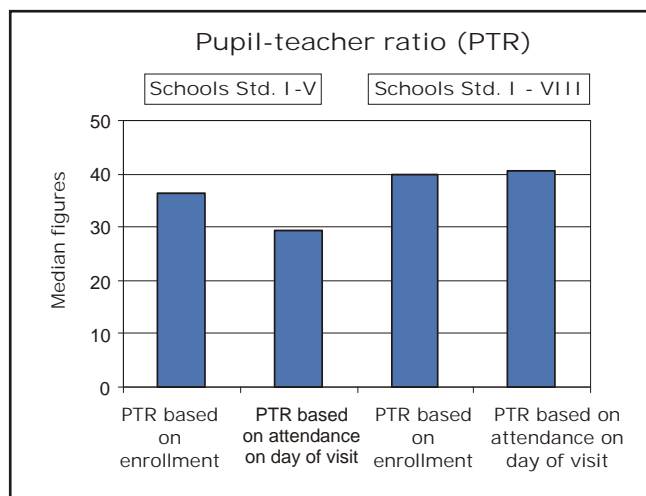
Comparison of government and private schools based on % Std. V children who CAN read level-2 and solve written numerical sums



Teachers, children, and classrooms

Teachers' attendance		
	Schools with:	
	Std. I-IV/V	Std. I - VIII
Total number of schools visited	308	230
% teachers attending (average)	73.8	64.5
% of schools with NO teachers present	4.5	3.5
% of schools with ALL teachers present	45.5	25.7

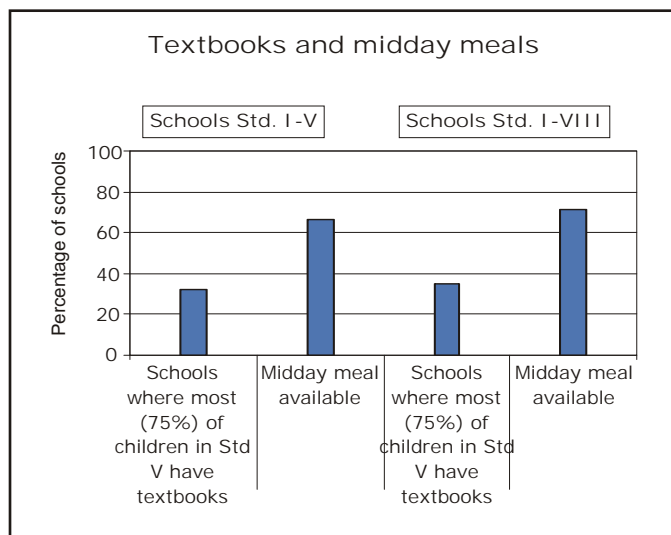
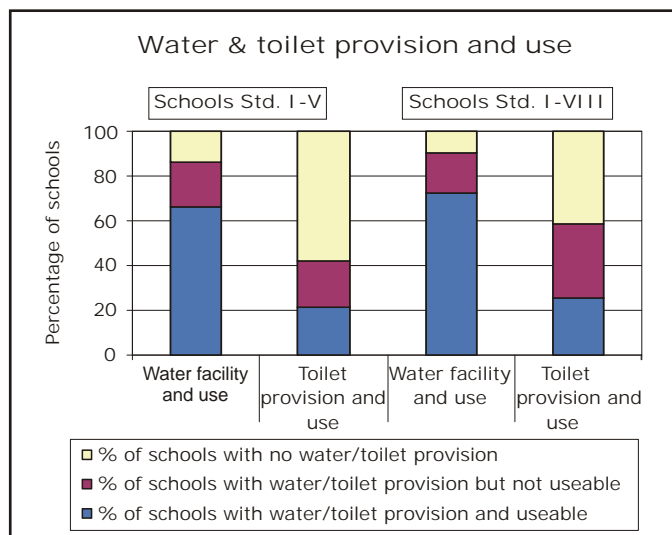
Schools with:	
Std. I-IV/V	Std. I - VIII
309	231
66	64.3
18.1	21.2



Average number of rooms available

Type of school by enrollment	% Schools visited	Std I-V rooms	Type of school by enrollment	% Schools visited	Std I-VIII rooms
<=50	14	2.4	<=150	21	5.1
51-75	17	2.4	151-250	44	5.9
76-150	40	4.0	251-350	23	8.8
151-225	20	5.3	351-450	6	7.0
>225	9	4.8	>450	6	10.6

Provision and use



Performance of all districts

District	All Children	Std V children		District	All Children	Std V children	
	% Out-of-school	% CAN read level - 2	% CAN solve division and subtraction		% Out-of-school	% CAN read level - 2	% CAN solve division and subtraction
Anugul	2.0	37.1	37.1	Kandhamal	8.0	52.6	45.1
Balangir	4.7	49.0	9.4	Kendrapara	4.7	47.6	37.8
Baleshwar	17.3	53.0	52.0	Kendujhar	4.3	54.7	22.1
Bargarh	5.5	55.1	19.6	Khordha	1.7	78.2	55.8
Baudh	4.8	73.9	17.2	Koraput	17.8	48.6	25.4
Bhadrak	1.0	62.7	38.7	Malkangiri	32.6	67.2	36.4
Cuttack	6.8	57.9	28.4	Mayurbhanj	8.2	72.1	41.9
Debagarh	2.8	64.5	31.6	Nabarangapur	18.7	28.4	28.0
Dhenkanal	4.2	70.6	31.8	Nayagarh	3.7	64.0	31.0
Gajapati	20.6	58.5	32.9	Nuapada	11.4	46.6	10.2
Ganjam	8.3	62.0	26.2	Puri	1.3	77.1	39.8
Jagatsinghapur	3.8	72.0	42.9	Rayagada	30.8	34.8	6.3
Jajapur	1.4	62.4	35.5	Sambalpur	9.0	53.0	24.5
Jharsuguda	4.3	61.8	29.0	Sonapur	3.9	43.0	14.0
Kalahandi	15.0	48.7	19.6	Sundargarh	10.6	46.4	20.9
				Orissa State	8.9	56.5	30.4

