

# MANIPUR RURAL

All analysis based on data from 9 out of 9 districts

## Enrollment

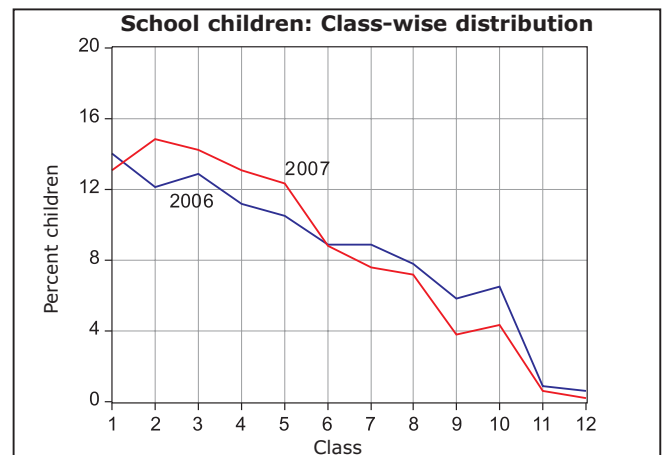
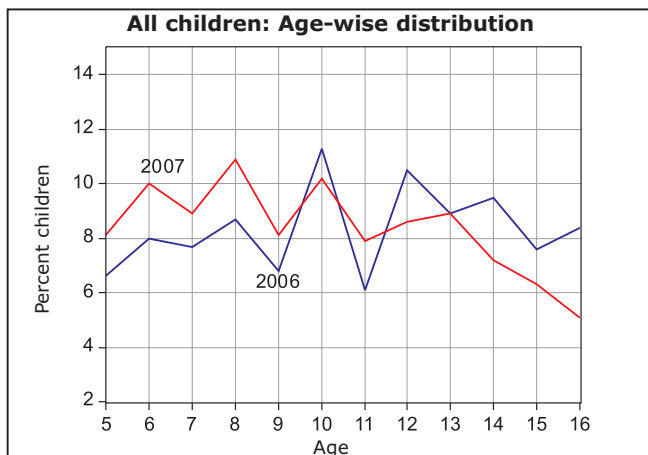
School enrollment and out of school children 2006 vs. 2007

	2006					2007				
	% Children in each age group in different types of schools				% Out of school	% Children in each age group in different types of schools				% Out of school
	Govt.	Pvt.	Other (Madarsa + EGS)	Not in School	Total	Govt.	Pvt.	Other (Madarsa + EGS)	Not in School	Total
Age: 6 -14 ALL	35.1	58.7	0.6	5.6	100	36.8	57.3	1.4	4.5	100
Age: 7-16 ALL	35.3	56.7	0.5	7.6	100	34.6	57.8	1.6	6.0	100
Age: 7- 10 ALL	35.1	59.3	0.8	4.8	100	38.4	57.5	0.7	3.4	100
Age: 7-10 BOYS	35.6	59.6	0.7	4.1	100	39.9	56.2	0.7	3.2	100
Age: 7-10 GIRLS	34.7	59.1	0.8	5.5	100	36.7	59.0	0.7	3.7	100
Age: 11-14 ALL	35.4	57.8	0.4	6.5	100	33.3	58.0	2.3	6.5	100
Age: 11-14 BOYS	33.0	59.6	0.5	6.9	100	32.9	58.1	3.1	5.9	100
Age: 11-14 GIRLS	38.0	55.7	0.3	5.9	100	33.8	57.8	1.3	7.1	100
Age: 15-16 ALL	35.3	48.5	0.2	16.0	100	25.5	58.5	2.5	13.5	100
Age: 15-16 BOYS	33.6	48.9	0.3	17.2	100	23.4	61.7	3.7	11.3	100
Age: 15-16 GIRLS	37.3	48.1	0.1	14.5	100	27.9	55.0	1.1	16.0	100

Note: "Not in school" includes children who have never gone to school or have dropped out.

## Age and Class

Age-wise and class-wise distribution of children in sample



## Young Children

In pre-school (Balwadi/Anganwadi) or in school 2006 vs. 2007

	2006					2007						
	In balwadi or anganwadi	% Children			Not going anywhere	Total	In balwadi or anganwadi	% Children			Not going anywhere	Total
		Govt.	Pvt.	Other School				Govt.	Pvt.	Other School		
Age: 3 ALL	76.0				24.0	100	80.5				19.5	100
Age: 4 ALL	70.7				29.3	100	78.7				21.3	100
Age: 5 ALL	23.4	24.7	42.7	0.6	8.6	100	25.0	29.9	37.2	3.4	4.5	100
Age: 6 ALL	3.3	32.5	57.5	0.7	6.1	100	4.8	39.5	51.0	1.0	3.7	100

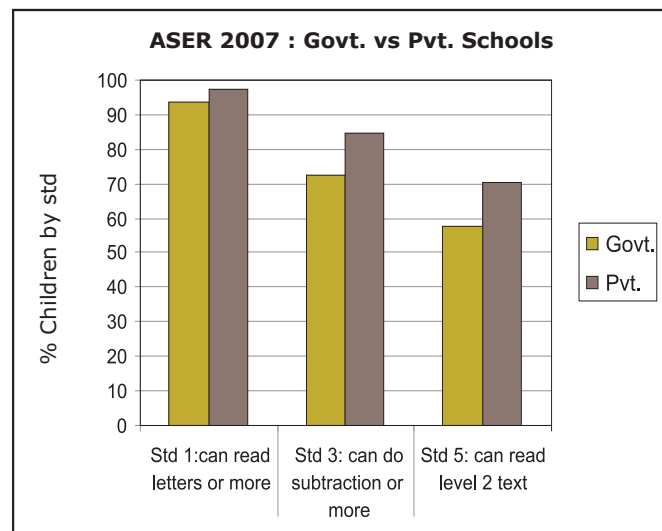
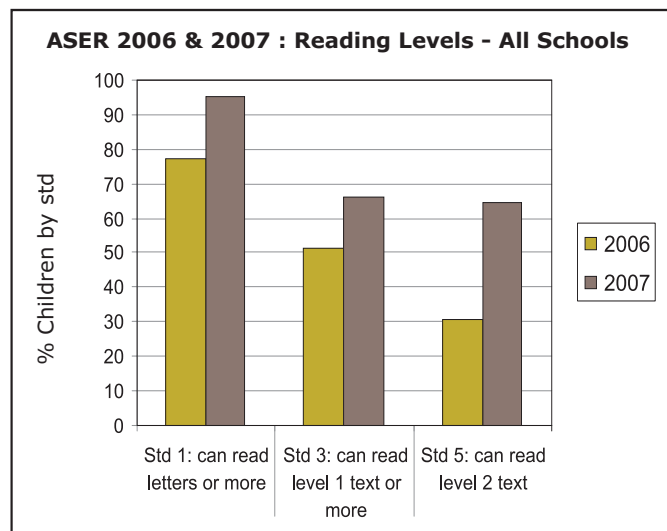
## Learning Level

Reading level: % Children who can read						
Std.	Nothing	Letter	Word	Level 1 (Std 1) Text	Level 2 (Std 2) text)	Total
<b>II</b>	1.5	15.1	45.2	27.7	10.6	100
<b>III</b>	1.0	6.7	26.3	37.3	28.7	100
<b>IV</b>	0.9	4.9	13.2	26.9	54.0	100
<b>V</b>	0.2	3.4	9.5	22.2	64.8	100
<b>VI</b>	0.8	1.3	6.4	16.1	75.4	100
<b>VII</b>	1.2	0.8	3.7	11.4	82.9	100
<b>VIII</b>	0.4	0.7	2.3	8.5	88.1	100
<b>Total</b>	1.4	10.9	21.2	22.0	44.5	100

Arithmetic level: % Children who can						
Std.	Nothing	Recognize Numbers		Subtract	Divide	Total
		1-9	10-99			
<b>I</b>	3.8	16.7	63.0	14.2	2.3	100
<b>II</b>	0.6	7.1	43.3	40.5	8.6	100
<b>III</b>	1.0	4.2	16.5	51.7	26.6	100
<b>IV</b>	0.9	3.9	8.2	35.2	51.8	100
<b>V</b>	0.8	2.7	5.6	23.3	67.6	100
<b>VI</b>	0.7	1.1	4.2	16.3	77.8	100
<b>VII</b>	0.8	1.0	3.0	11.0	84.4	100
<b>VIII</b>	0.7	0.5	1.6	6.8	90.5	100
<b>Total</b>	1.2	5.3	21.2	27.8	44.4	100

Only subtraction and division data comparable with previous ASER.

## Comparisons



\*Please note that Manipur has insufficient data to report English results

## Comprehension & Problem solving

### Ability of children by reading level to read and answer orally

Children in age group : 6 to 10				Children in age group : 11 to 14			
Reading level	% Children in specific reading level	% at each level who can orally answer questions		Reading level	% Children in specific reading level	% at each level who can orally answer questions	
		based on Std 1 level text only	based on Std 2 level text			based on Std 1 level text only	based on Std 2 level text
Word	30.1	6.3	4.3	Word	9.4	21.4	19.6
Std 1 level text	26.1	56.8	22.0	Std 1 level text	19.1	53.9	26.0
Std 2 level text	27.0	87.1	77.3	Std 2 level text	67.9	93.7	82.9

### Ability of children by age to listen to a subtraction problem and answer

In-school children			
Age group	% Children who can solve		
	None	Simple problem only	Both problems
6 to 8	66.1	7.9	23.9
9 to 10	29.8	9.0	58.6
11 to 14	11.3	5.8	80.7

Children not in-school			
Age group	% Children who can solve		
	None	Simple problem only	Both problems
6 to 8	93.7	0.0	6.3
9 to 10	71.5	3.2	23.0
11 to 14	32.9	4.1	62.0

**ঐশ্ব্যয়গী ইংখোলদা হৈনৌ পাম্বী হৌই।**  
**হৈনৌ যামনা পানলি।**  
**মদুদী মখোঙদা শাননৈ।**  
**হৈনৌ কেনবদা ঐশ্ব্যয়না চায়।**

**Q. 1) ইংখোলদা করি হৌই ?**  
**Q. 2) হৈনৌ কননা চায়?**

চাউবা অদীকপা মুপামচা অমনি। মহাক সাইকল তেংবা শামই। মপানা অশংবা মচুগী সাইকল মচা অমা সৈবীরে। মহাক সাইকল খৌবা হৈরে। নোংমা মহাকনা সাইকল অদু খৌবদা তুরে। সাইকল অদুদী চাকা অমা খোয়রে। মহাক পাখংতুনা কপখি। চাউবনা মগী মুদা হনলকই। মহাককী মপানা মাদু খেমবীরে। মগী সাইকল অদু অদুক শেমবীরে। অদুক খৌবা যারে। চাওখা যান্না হরাওরে। মহাকনা মপানু খাপঙচরে।

**Q. 3) চাওখী সাইকল মচু করিনো?**  
**Q. 4) চাওখা করিগী কপখি?**

1) You have Rs.50. From that you buy books for Rs.25. How much money do you have left with you now?

2) You have Rs.50. From that you buy crackers for Rs.35. How much money do you have left with you now?

### Ability of children by arithmetic level to listen to a subtraction problem and answer

Children in age group : 6 to 10				
Arithmetic level	% Children in specific arithmetic level	% Children in specific arithmetic level who can solve		
		None	Simple problem only	Both problems
Number recognition 10-99	30.8	78.1	7.0	12.5
Subtraction	34.3	50.9	12.1	34.9
Division	26.8	8.7	7.0	82.0

Children in age group : 11 to 14				
Arithmetic level	% Children in specific arithmetic level	% Children in specific arithmetic level who can solve		
		None	Simple problem only	Both problems
Number recognition 10-99	6.3	48.0	5.7	42.1
Subtraction	22.0	23.2	10.4	63.2
Division	68.9	2.8	4.2	91.5

### School going children attending tuition class

Std.	% Children							
	I	II	III	IV	V	VI	VII	VIII
Govt. school	17.5	18.0	19.3	25.7	24.1	26.5	28.8	35.8
Pvt. school	43.3	52.3	52.9	53.6	58.3	53.6	59.4	59.9



**School Observations:** Schools visited - Primary (Std 1-4/5): 97; Primary+Upper-primary (Std 1-8): 34

Teacher attendance	2005		2007	
	Std. 1-4/5	Std. 1-8	Std. 1-4/5	Std. 1-8
% teachers attending (average)	Insufficient Data		90.3	83.3
% schools with no teacher present	Insufficient Data		0.0	0.0
% schools with all teachers present	Insufficient Data		61.4	24.1

Children's attendance	2005		2007	
	Std. 1-4/5	Std. 1-8	Std. 1-4/5	Std. 1-8
% enrolled children attending (average)	Insufficient Data		77.6	79.6
% schools with less than 50% enrolled children attending	Insufficient Data		11.3	12.9
% schools with 75% and more enrolled children attending	Insufficient Data		62.5	74.2

Pupil teacher ratio (median)	2005		2007	
	Std. 1-4/5*	Std. 1-8	Std. 1-4/5	Std. 1-8
Based on children enrolled & teachers appointed	Insufficient Data		15.8	15.2
Based on children & teachers present	Insufficient Data		14.0	14.6

School grants and teacher grants	2006		2007*	
	Std. 2	Std. 4	Std. 2	Std. 4
	% Schools			
Teacher received TLM grant	47.4	39.2	12.9	13.8
School received school maintenance grant	53.4		26.6	

Water/toilet and midday meal	2005		2007	
	Std. 1-4/5*	Std. 1-8	Std. 1-4/5	Std. 1-8
	% Schools			
Schools with no water provision	Insufficient Data		91.6	74.2
Schools with water provision but water not available	Insufficient Data		2.1	3.2
Schools with water provision and water available	Insufficient Data		6.3	22.6
Schools with no toilet provision	Insufficient Data		55.8	28.1
Schools with toilet provision but not being used	Insufficient Data		13.7	15.6
Schools with toilet provision and use	Insufficient Data		30.5	56.3
Schools with midday meal being served on that day	Insufficient Data		78.7	75.0

Multigrade classes	2007	
	Std. 1-4/5	Std. 1-8
Schools in which...	% Schools	
Std II class sits with another class	19.2	6.1
Std IV class sits with another class	10.3	9.4

Over 90% classes that were visited have blackboards. In about 75% of these classes most children have text books and pens or pencils and in close to 60% of these classes children had note books.

Please note that while 2005 data was collected during ASER 2005, 2006 data reported in the Grants table was collected in ASER 2007 by asking for last year's grant information to the respondent.

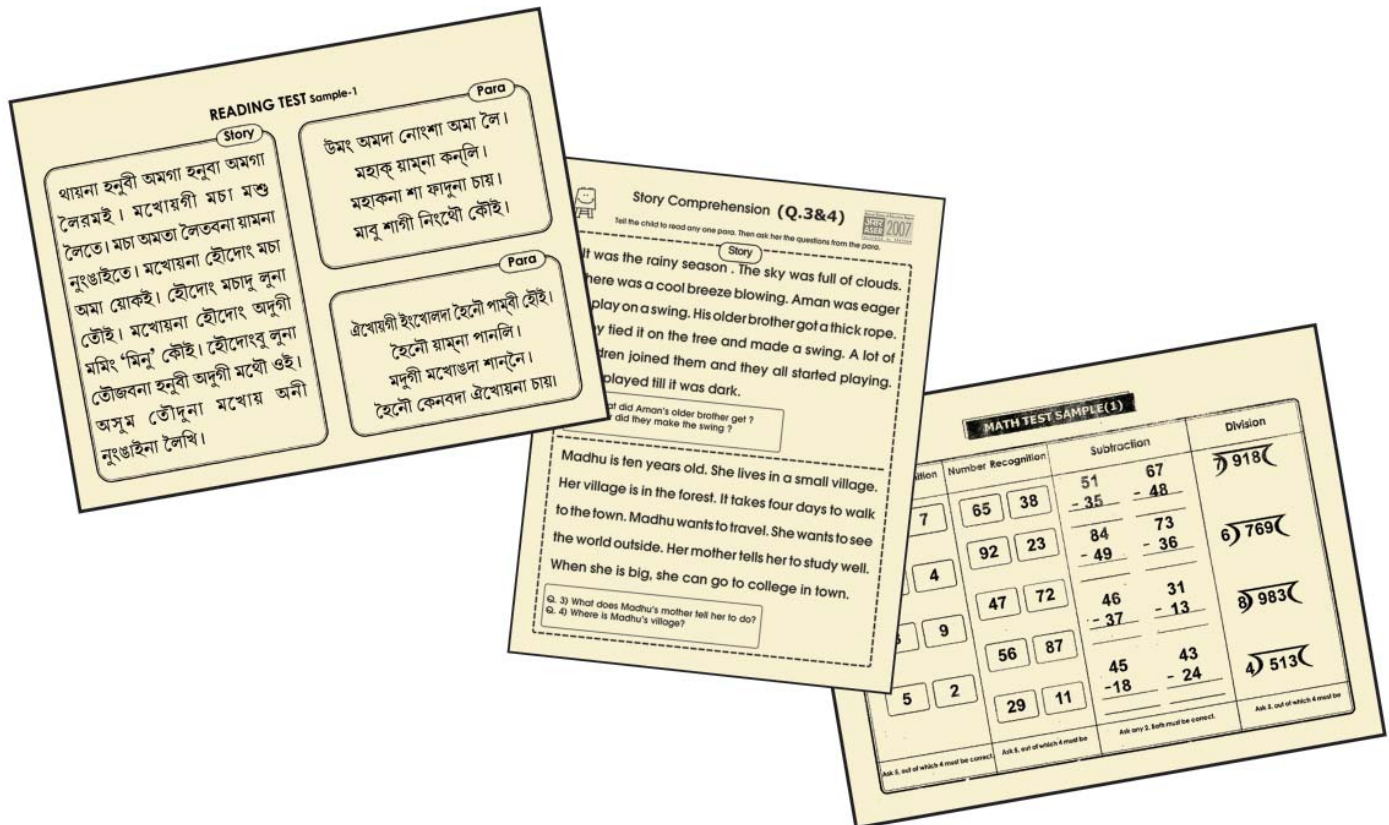
Note: ASER 2007 survey was carried out in October and November 2007. One govt. school with primary grades was visited in the sampled village. If there was more than one govt. school with primary grades, then the school with the highest enrollment was visited. Hence the schools visited in the survey do not represent a random sample from the district. The school visits were generally done either on a Saturday or a Monday.



\*Grants for 2007 may be lower than 2006 since the survey was conducted in the middle of the year.

## Performance of districts

District	Pre- school	Out of school	Private school	Std 1-2 : Learning levels			Std 3-5 : Learning levels		
	% Children (Age 3-4) in Anganwadi or other pre-school	% Children (Age 6-14) Out of school	% Children (Age 6-14) in Private school	% Children (Std 1-2) who CAN READ letters, words or more in OWN LANGUAGE	% Children (Std 1-2) who CAN RECOGNIZE NUMBERS (1-9) or more	% Children (Std 1-2) who CAN READ letters or more in ENGLISH**	% Children (Std 3-5) who CAN READ Level 1 (Std 1) text or more in OWN LANGUAGE	% Children (Std 3-5) who CAN SUBTRACT or do more	% Children (Std 3-5) who CAN READ sentences in ENGLISH**
Senapati	80.8	9.0	42.6	84.1	89.2		36.3	53.8	
Tamenglong	86.9	4.5	34.9	99.1	99.4		75.9	77.9	
Churachandpur	6.9	1.6	83.6	98.6	99.1		96.4	90.0	
Bishnupur	61.0	7.0	62.3	93.9	93.1		72.1	85.4	
Thoubal	97.9	0.7	64.7	100.0	100.0		96.1	99.5	
Imphal West	83.1	12.2	63.7	97.0	99.0		62.8	81.3	
Imphal East	77.2	0.8	62.2	100.0	100.0		75.1	84.1	
Ukhrul*		3.0	43.1	99.4	99.7		81.5	94.4	
Chandel	91.3	4.5	33.1	100.0	100.0		94.7	96.1	
<b>Total</b>	<b>79.5</b>	<b>4.5</b>	<b>57.3</b>	<b>97.1</b>	<b>97.9</b>		<b>77.5</b>	<b>85.1</b>	



\*Blank cells indicate insufficient data.

\*\*Manipur has insufficient data to report English results.