

# RAJASTHAN RURAL

All analysis based on data from 32 out of 32 districts

## Enrollment

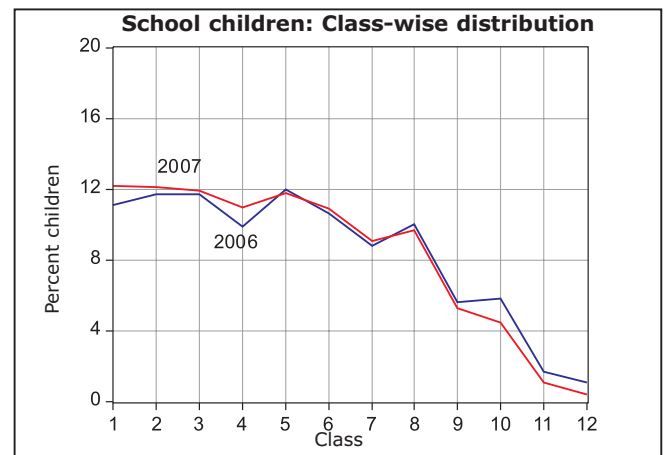
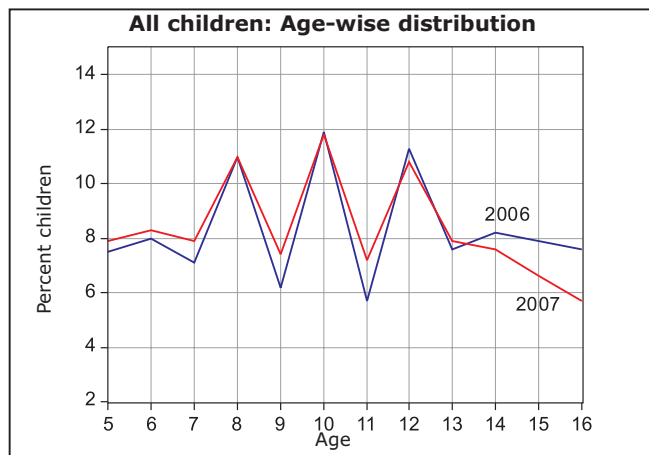
School enrollment and out of school children 2006 vs. 2007

	2006					2007				
	% Children in each age group in different types of schools				% Out of school	% Children in each age group in different types of schools				% Out of school
	Govt.	Pvt.	Other (Madarsa + EGS)	Not in School		Total	Govt.	Pvt.	Other (Madarsa + EGS)	
Age: 6 -14 ALL	63.6	25.2	0.4	10.8	100	66.3	26.7	0.4	6.5	100
Age: 7-16 ALL	62.7	23.1	0.3	13.9	100	64.7	25.3	0.4	9.6	100
Age: 7- 10 ALL	63.3	28.3	0.5	8.0	100	66.7	28.5	0.6	4.3	100
Age: 7-10 BOYS	62.8	31.1	0.5	5.7	100	65.0	31.6	0.5	2.9	100
Age: 7-10 GIRLS	64.0	24.6	0.5	11.0	100	68.9	24.4	0.7	6.0	100
Age: 11-14 ALL	64.8	21.0	0.3	13.9	100	66.4	23.7	0.2	9.7	100
Age: 11-14 BOYS	66.1	23.7	0.3	9.9	100	67.2	26.3	0.2	6.3	100
Age: 11-14 GIRLS	63.1	17.1	0.2	19.6	100	65.3	20.0	0.4	14.4	100
Age: 15-16 ALL	56.8	15.2	0.1	27.8	100	54.0	19.6	0.3	26.2	100
Age: 15-16 BOYS	60.5	16.8	0.0	22.6	100	56.0	21.3	0.3	22.4	100
Age: 15-16 GIRLS	49.8	12.2	0.3	37.7	100	50.7	16.7	0.4	32.2	100

Note: "Not in school" includes children who have never gone to school or have dropped out.

## Age and Class

Age-wise and class-wise distribution of children in sample



## Young Children

In pre-school (Balwadi/Anganwadi) or in school 2006 vs. 2007

	2006					2007						
	In balwadi or anganwadi	% Children			Not going anywhere	Total	In balwadi or anganwadi	% Children			Not going anywhere	Total
		Govt.	Pvt.	Other School				Govt.	Pvt.	Other School		
Age: 3 ALL	63.3				36.7	100	60.1				39.9	100
Age: 4 ALL	68.7				31.3	100	60.8				39.2	100
Age: 5 ALL	6.0	48.5	22.2	0.3	23.0	100	11.7	48.6	30.1	1.1	8.6	100
Age: 6 ALL	0.8	59.4	28.6	0.3	10.9	100	3.2	60.5	29.6	0.6	6.0	100

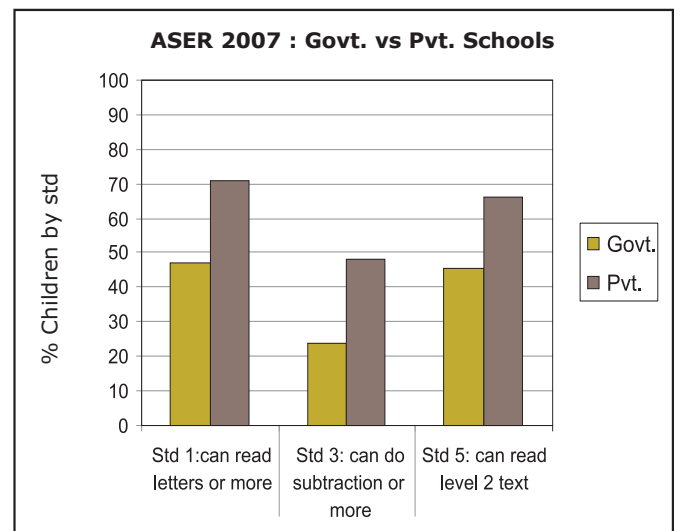
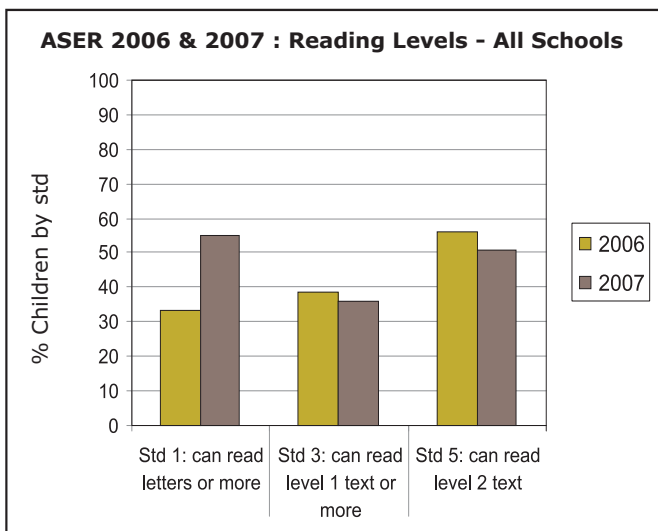
## Learning Level

Reading level: % Children who can read						
Std.	Nothing	Letter	Word	Level 1 (Std 1) Text	Level 2 (Std 2) text)	Total
<b>II</b>	16.0	42.5	29.1	7.5	5.0	100
<b>III</b>	5.8	22.7	35.7	20.8	15.0	100
<b>IV</b>	2.3	11.5	25.2	28.8	32.2	100
<b>V</b>	1.2	5.9	15.7	26.3	50.9	100
<b>VI</b>	0.7	2.9	7.7	19.5	69.3	100
<b>VII</b>	0.4	1.0	2.9	13.6	82.1	100
<b>VIII</b>	0.1	0.9	1.7	6.6	90.6	100
<b>Total</b>	9.6	17.4	16.6	15.7	40.8	100

Arithmetic level: % Children who can						
Std.	Nothing	Recognize Numbers		Subtract	Divide	Total
		1-9	10-99			
<b>I</b>	42.2	43.7	12.0	1.3	0.8	100
<b>II</b>	16.2	42.3	30.8	8.5	2.1	100
<b>III</b>	7.1	25.7	36.6	23.0	7.5	100
<b>IV</b>	3.4	13.9	30.1	31.8	20.9	100
<b>V</b>	1.7	7.5	20.6	33.2	37.1	100
<b>VI</b>	1.0	4.5	14.6	27.3	52.7	100
<b>VII</b>	0.6	2.0	7.9	22.2	67.2	100
<b>VIII</b>	0.2	1.3	4.5	14.9	79.2	100
<b>Total</b>	9.6	18.6	20.3	20.2	31.3	100

Only subtraction and division data comparable with previous ASER.

### Comparisons



English reading level: % Children who						
Std.	Cannot read capital letters	Can read capital letters	Can read small letters	Can read simple words	Can read easy sentences	Total
<b>I</b>	64.0	25.7	7.3	2.3	0.7	100
<b>II</b>	40.4	32.7	18.0	7.5	1.4	100
<b>III</b>	23.1	29.3	23.3	20.0	4.2	100
<b>IV</b>	12.6	22.1	22.9	30.1	12.3	100
<b>V</b>	7.8	14.5	19.6	36.9	21.2	100
<b>VI</b>	4.2	9.9	13.7	35.7	36.5	100
<b>VII</b>	2.3	4.9	8.5	31.6	52.8	100
<b>VIII</b>	0.8	2.8	5.0	21.9	69.4	100
<b>Total</b>	20.4	18.5	15.2	22.9	23.0	100

English comprehension		
Std.	Of those who can read words, % who can tell meaning of the words	Of those who can read sentences, % who can tell meaning of sentences
<b>I</b>	44.3	56.8
<b>II</b>	54.1	69.5
<b>III</b>	56.1	74.3
<b>IV</b>	63.1	75.3
<b>V</b>	63.4	74.0
<b>VI</b>	63.2	80.5
<b>VII</b>	64.0	80.9
<b>VIII</b>	65.6	86.5
<b>Total</b>	62.1	81.2

## Comprehension &amp; Problem solving

## Ability of children by reading level to read and answer orally

Children in age group : 6 to 10				Children in age group : 11 to 14			
Reading level	% Children in specific reading level	% at each level who can orally answer questions		Reading level	% Children in specific reading level	% at each level who can orally answer questions	
		based on Std 1 level text only	based on Std 2 level text			based on Std 1 level text only	based on Std 2 level text
Word	22.8	10.1	5.3	Word	8.3	19.3	10.6
Std 1 level text	17.3	60.3	18.6	Std 1 level text	16.3	69.1	30.3
Std 2 level text	25.1	89.3	81.7	Std 2 level text	70.6	94.5	89.8

## Ability of children by age to listen to a subtraction problem and answer

In-school children			
Age group	% Children who can solve		
	None	Simple problem only	Both problems
6 to 8	75.6	5.4	17.6
9 to 10	42.8	9.0	46.4
11 to 14	19.1	7.1	72.1

Children not in-school			
Age group	% Children who can solve		
	None	Simple problem only	Both problems
6 to 8	93.1	0.9	5.3
9 to 10	76.2	5.3	18.5
11 to 14	50.8	7.0	39.9

बरसात का मौसम है।  
खूब पानी बरस रहा है।  
चारों ओर पानी है।  
हम सब पानी में खेलेंगे।

प्र.1 हम सब पानी में क्या करेंगे?  
प्र.2 कौनसा मौसम है?

एक खरगोश था। वह बहुत आलसी था। एक दिन वह पेड़ के नीचे आराम कर रहा था। अचानक उसने चींटी को देखा। चींटी पेड़ पर चढ़ रही थी और फिर नीचे उतर रही थी। खरगोश ने सोचा चींटी इतनी छोटी है, पर वह कितनी मेहनत करती है। उसे देख कर लगता है कि मुझे भी काम करना चाहिये।

प्र.3 खरगोश कहीं आराम कर रहा था?  
प्र.4 चींटी क्या कर रही थी?

(1) आपके पास 50 रुपये हैं। उनमें से आपने 25 रुपये की किताबें खरीदीं। अब आपके पास कितने रुपये बचे हैं?

(2) आपके पास 50 रुपये हैं। आपने 23 रुपये के फल खरीदे। अब आपके पास कितने रुपये बचे हैं?

## Ability of children by arithmetic level to listen to a subtraction problem and answer

Children in age group : 6 to 10				
Arithmetic level	% Children in specific arithmetic level	% Children in specific arithmetic level who can solve		
		None	Simple problem only	Both problems
Number recognition 10-99	26.0	77.9	7.8	12.5
Subtraction	20.3	34.7	15.0	47.0
Division	17.1	6.2	5.2	87.4

Children in age group : 11 to 14				
Arithmetic level	% Children in specific arithmetic level	% Children in specific arithmetic level who can solve		
		None	Simple problem only	Both problems
Number recognition 10-99	13.3	60.0	11.4	26.4
Subtraction	23.9	22.8	13.9	60.3
Division	56.8	2.8	3.7	92.5

## School going children attending tuition class

Std.	% Children							
	I	II	III	IV	V	VI	VII	VIII
Govt. school	1.5	2.1	2.5	3.0	3.6	3.9	5.8	8.9
Pvt. school	6.8	8.8	9.2	11.2	11.1	13.6	13.1	19.6



**School Observations:** Schools visited - Primary (Std 1-4/5): 365; Primary+Upper-primary (Std 1-8): 449

Teacher attendance	2005		2007	
	Std. 1-4/5	Std. 1-8	Std. 1-4/5	Std. 1-8
% teachers attending (average)	80.7	79.2	91.6	85.4
% schools with no teacher present	5.4	1.8	0.3	0.8
% schools with all teachers present	55.8	37.5	75.0	49.6

Children's attendance	2005		2007	
	Std. 1-4/5	Std. 1-8	Std. 1-4/5	Std. 1-8
% enrolled children attending (average)	71.3	75.2	67.3	72.4
% schools with less than 50% enrolled children attending	11.8	4.4	14.9	9.1
% schools with 75% and more enrolled children attending	49.2	56.0	40.1	53.2

Pupil teacher ratio (median)	2005		2007	
	Std. 1-4/5	Std. 1-8	Std. 1-4/5	Std. 1-8
Based on children enrolled & teachers appointed	40.1	35.5	35.7	37.1
Based on children & teachers present	33.4	33.8	26.0	29.6

School grants and teacher grants	2006		2007*	
	Std. 2	Std. 4	Std. 2	Std. 4
	% Schools			
Teacher received TLM grant	72.6	71.1	61.1	59.8
School received school maintenance grant	73.9		49.9	

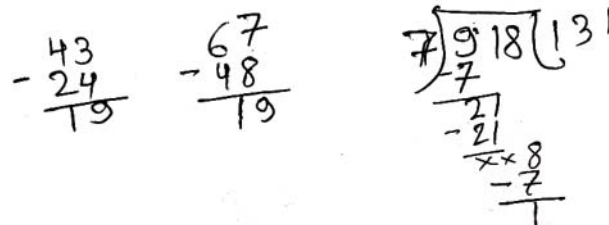
Water/toilet and midday meal	2005		2007	
	Std. 1-4/5	Std. 1-8	Std. 1-4/5	Std. 1-8
	% Schools			
Schools with no water provision	26.6	27.2	21.1	15.1
Schools with water provision but water not available	8.4	11.6	9.2	8.5
Schools with water provision and water available	65.0	61.2	69.7	76.4
Schools with no toilet provision	23.4	15.4	14.7	4.3
Schools with toilet provision but not being used	17.4	16.5	16.7	15.1
Schools with toilet provision and use	59.2	68.1	68.6	80.6
Schools with midday meal being served on that day	81.8	83.9	98.9	98.4

Multigrade classes	2007	
	Std. 1-4/5	Std. 1-8
Schools in which...	% Schools	
Std II class sits with another class	68.2	64.5
Std IV class sits with another class	53.0	46.2

Over 90% classes that were visited have blackboards. In over 90% of these classes, most children have textbooks, notebooks and pen or pencil.

Please note that while 2005 data was collected during ASER 2005, 2006 data reported in the Grants table was collected in ASER 2007 by asking for last year's grant information to the respondent.

Note: ASER 2007 survey was carried out in October and November 2007. One govt. school with primary grades was visited in the sampled village. If there was more than one govt. school with primary grades, then the school with the highest enrollment was visited. Hence the schools visited in the survey do not represent a random sample from the district. The school visits were generally done either on a Saturday or a Monday.



\*Grants for 2007 may be lower than 2006 since the survey was conducted in the middle of the year.

## Performance of districts

District	Pre- school	Out of school	Private school	Std 1-2 : Learning levels			Std 3-5 : Learning levels		
	% Children (Age 3-4) in Anganwadi or other pre-school	% Children (Age 6-14) Out of school	% Children (Age 6-14) in Private school	% Children (Std 1-2) who CAN READ letters, words or more in OWN LANGUAGE	% Children (Std 1-2) who CAN RECOGNIZE NUMBERS (1-9) or more	% Children (Std 1-2) who CAN READ letters or more in ENGLISH	% Children (Std 3-5) who CAN READ Level 1 (Std 1) text or more in OWN LANGUAGE	% Children (Std 3-5) who CAN SUBTRACT or do more	% Children (Std 3-5) who CAN READ sentences in ENGLISH
Ajmer	72.5	8.2	17.5	64.2	67.8	48.9	58.4	46.6	9.0
Alwar	66.7	5.0	36.3	71.3	74.1	52.9	66.8	65.4	23.6
Banswara	75.0	10.5	11.0	52.0	57.1	33.7	30.6	17.4	2.3
Baran	65.2	6.2	23.1	61.2	65.9	39.3	47.9	47.1	8.8
Barmer	55.1	9.0	3.8	63.3	62.1	52.7	66.7	66.2	31.6
Bharatpur	49.0	6.2	46.3	64.0	66.7	57.5	60.4	59.4	23.5
Bhilwara	71.6	5.4	9.6	87.4	85.3	55.0	60.1	51.4	10.8
Bikaner	53.4	14.1	26.7	60.1	58.6	32.7	57.4	41.1	7.7
Bundi	58.5	5.4	19.7	78.2	78.1	51.8	53.2	51.5	9.2
Chittaurgarh	81.0	5.2	12.5	67.7	64.5	33.5	51.2	42.2	6.7
Churu	72.5	7.8	43.2	61.5	58.0	33.0	52.7	42.1	7.2
Dausa	49.0	3.4	31.1	71.4	69.1	45.1	64.9	57.7	16.1
Dhaulpur	56.9	5.5	28.2	68.5	73.1	48.7	51.2	49.5	12.6
Dungarpur	62.8	9.1	10.2	79.8	81.4	46.2	48.6	38.2	4.2
Ganganagar	48.9	6.3	32.2	87.7	88.1	69.4	76.5	80.9	14.1
Hanumangarh	78.8	2.7	35.7	77.3	75.1	52.6	73.5	58.1	15.9
Jaipur	45.5	2.3	38.8	71.5	75.5	51.6	67.9	64.3	15.5
Jaisalmer	63.6	14.3	4.0	60.5	67.8	40.7	53.5	46.7	8.8
Jalor	71.5	9.6	13.1	58.7	55.7	34.6	55.4	48.5	8.9
Jhalawar	75.6	10.2	17.7	67.2	68.0	40.3	49.9	42.2	8.6
Jhunjhunu	44.6	1.6	48.5	76.2	76.0	56.1	72.4	65.2	23.8
Jodhpur	56.0	9.9	24.3	69.3	68.0	53.7	58.4	45.3	12.9
Karauli	43.1	5.9	32.9	64.0	68.3	47.6	52.2	50.0	8.1
Kota	40.9	3.2	47.2	68.5	71.8	47.5	50.4	45.0	11.7
Nagaur	40.5	5.6	37.0	67.1	65.5	46.6	57.4	48.9	10.6
Pali	62.7	7.3	19.3	63.5	70.0	38.1	50.4	43.7	8.6
Rajasamand	87.3	3.5	8.2	82.4	82.0	67.4	63.3	45.8	5.8
Sawai Madhopur	56.5	5.8	26.6	75.5	75.8	56.4	50.8	54.0	16.4
Sikar	54.7	2.1	47.6	87.4	88.9	72.7	64.4	64.2	8.3
Sirohi	62.5	11.2	13.2	63.8	64.9	37.6	44.1	41.9	10.0
Tonk	65.0	7.0	34.6	70.1	74.7	53.9	55.7	48.8	13.4
Udaipur	56.8	10.1	10.7	66.1	69.4	31.6	52.4	37.3	8.4
<b>Total</b>	<b>60.5</b>	<b>6.5</b>	<b>26.7</b>	<b>69.6</b>	<b>70.9</b>	<b>47.9</b>	<b>57.9</b>	<b>51.1</b>	<b>12.6</b>