

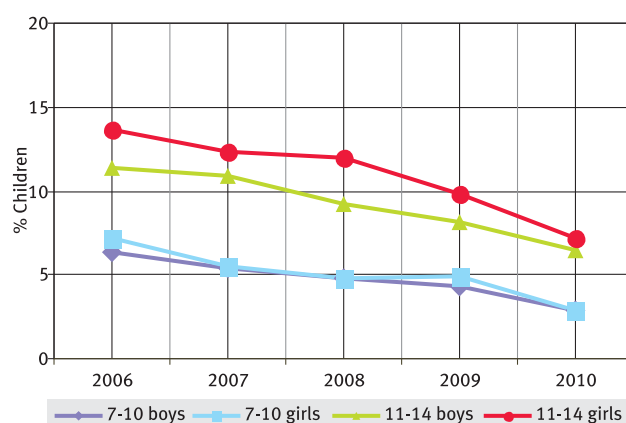
SCHOOL ENROLLMENT AND OUT OF SCHOOL CHILDREN

TABLE 1: % CHILDREN IN DIFFERENT TYPES OF SCHOOLS 2010

Age group	Govt.	Pvt.	Other	Not in School	Total
AGE: 6-14 ALL	89.9	5.4	0.3	4.5	100
AGE: 7-16 ALL	86.0	5.8	0.3	7.9	100
AGE: 7-10 ALL	91.8	4.9	0.5	2.9	100
AGE: 7-10 BOYS	91.7	4.9	0.5	2.8	100
AGE: 7-10 GIRLS	91.9	4.8	0.4	2.9	100
AGE: 11-14 ALL	87.8	5.3	0.1	6.8	100
AGE: 11-14 BOYS	87.9	5.5	0.1	6.4	100
AGE: 11-14 GIRLS	87.6	5.1	0.2	7.2	100
AGE: 15-16 ALL	66.1	9.5	0.1	24.4	100
AGE: 15-16 BOYS	66.1	8.8	0.0	25.1	100
AGE: 15-16 GIRLS	66.1	10.3	0.1	23.5	100

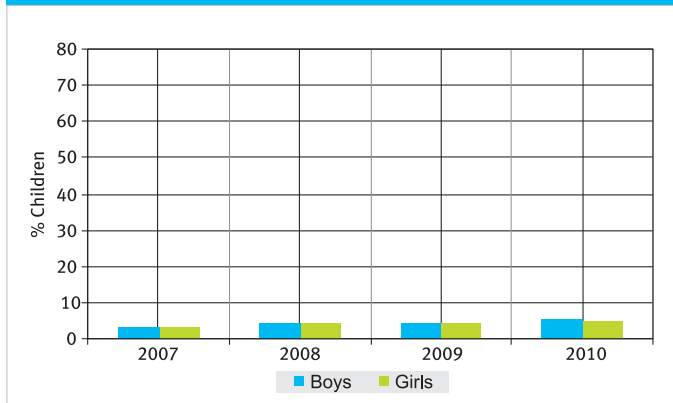
NOTE: 'OTHER' includes children going to madarssa and EGS.
 'NOT IN SCHOOL' = dropped out + never enrolled.

CHART 1: TRENDS OVER TIME
 % CHILDREN OUT OF SCHOOL BY AGE GROUP AND GENDER 2006-2010



How to read this chart: For example, the proportion of girls (age 11-14) not in school has changed from 13.7% in 2006 to 12.4% in 2007 to 12% in 2008, 9.9% in 2009 and to 7.2% in 2010.

CHART 2: TRENDS OVER TIME
 % BOYS AND GIRLS AGE 6-14 ENROLLED IN PVT SCHOOL 2007-2010



How to read this chart: In 2010, 5.6% of all boys (age 6-14) were enrolled in private school and 5.1% of all girls (age 6-14) were enrolled in private school.

TABLE 2: SAMPLE DESCRIPTION
 % CHILDREN IN EACH CLASS BY AGE 2010

Std.	5	6	7	8	9	10	11	12	13	14	15	16	Total
I	40.7	41.6	11.4					6.3					100
II	3.4	14.7	57.7	17.4				6.8					100
III		2.0	12.0	66.1	12.0	4.3			3.5				100
IV		3.6		13.8	59.3	19.0			4.3				100
V		3.8			8.0	65.0	13.5	6.1		3.7			100
VI			2.8			10.8	55.5	23.7	3.5		3.8		100
VII				4.2			7.4	65.4	14.2	5.3		3.5	100
VIII					5.4			13.5	57.3	17.5	4.8	1.4	100

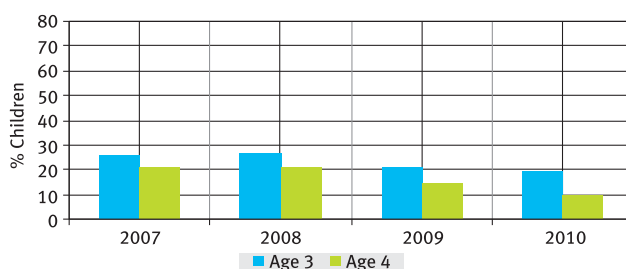
How to read this table: If a child started school in Std I at age 6, she should be age 8 in Std 3. This table shows the age distribution for each class. For example, in Std III, 66.1% children are 8 years old but there are also 12% who are 7, 12% who are 9, 4.3% who are 10 years old, etc.

YOUNG CHILDREN IN PRE-SCHOOL AND SCHOOL

TABLE 3: % CHILDREN AGE 3-6 WHO ATTEND DIFFERENT TYPES OF PRE-SCHOOL & SCHOOL 2010

	In balwadi or anganwadi	In LKG/UKG	In School			Not going anywhere	Total
			Govt	Pvt	Other		
AGE 3	77.0	3.6				19.4	100
AGE 4	83.6	6.7				9.7	100
AGE 5	29.0	3.1	54.9	7.1	0.5	5.5	100
AGE 6	5.8	2.3	81.1	7.4	0.2	3.3	100

CHART 3: TRENDS OVER TIME
 % CHILDREN AGE 3-4 NOT ATTENDING ANYWHERE 2007-2010



In 2010, 90.4% of sampled villages reported having an anganwadi in the village.
 How to read this chart: For example, in 2010, 19.4% of all age 3 children were not attending any kind of preschool or school.

PERFORMANCE OF DISTRICTS

TABLE 8 District Name	Anganwadi or balwadi	Out of school	Private school	Tuition	Std I-II : Learning levels		Std III-V : Learning levels		Std V-VIII : Everyday calculations			
	% Children (Age 3-4) in anganwadi or pre-school	% Children (Age: 6-14) out of school	% Children (Age: 6-14) in private school	% Children (Std IV-VIII) attending paid tuition classes	% Children (Std I-II) who CAN READ letters or more	% Children (Std I-II) who CAN RECOGNIZE NUMBERS 1 to 9 or more	% Children (Std III-V) who CAN READ Level 1 (Std 1 Text) or more	% Children (Std III-V) who CAN DO SUBTRACTION or more	% Children answering both questions correctly	% Children answering both questions correctly	% Children answering both questions correctly	% Children answering both questions correctly
									Menu	Calendar	Area	Estimation
Anugul	93.3	2.1	6.6	32.3	74.1	79.5	64.9	53.6	76.2	57.8	22.0	33.5
Balangir	60.0	1.5	4.3	25.5	44.6	40.0	53.0	36.6	50.2	52.1	22.4	27.0
Baleswar	81.7	1.6	6.9	82.4	89.2	80.3	65.5	65.5	87.8	47.7	19.7	8.2
Bargarh	97.5	0.6	12.0	33.2	83.1	78.2	57.6	46.5	60.0	49.5	41.0	49.5
Boudh	83.2	3.6	2.1	32.3	68.7	70.9	56.7	38.7	37.1	24.7	7.5	13.4
Bhadrak	94.3	0.3	3.3	82.1	95.7	95.0	86.1	82.6	91.2	52.3	29.0	24.2
Cuttack	85.2	2.7	9.3	73.9	94.2	92.1	76.4	67.5	82.9	61.3	34.8	40.2
Deogarh*		1.6	3.3	35.1	86.0	84.7	66.1	63.6	34.3	24.4	16.7	21.5
Dhenkanal	88.5	1.7	1.9	36.3	91.0	86.6	70.9	48.3	36.6	29.7	22.2	28.8
Gajapati	97.8	6.2	5.3	45.3	66.3	63.5	60.6	54.9	63.5	60.6	47.5	43.3
Ganjam	90.4	8.7	3.8	75.5	71.2	67.5	57.9	49.8	60.6	57.5	48.3	49.1
Jagatsinghapur	90.1	0.6	6.4	72.9	95.2	87.3	82.3	72.9	89.2	73.1	26.0	39.2
Jajapur	98.2	0.4	5.7	65.2	87.1	85.0	79.7	71.1	76.2	61.5	53.1	53.7
Jharsuguda	99.3	2.2	4.4	19.4	83.3	82.2	69.9	59.2	71.4	69.5	58.9	59.6
Kalahandi	79.7	6.9	2.9	38.5	77.7	65.2	43.0	35.7	42.4	32.4	14.1	20.4
Kandhamal	100.0	8.9	0.7	4.6	60.0	54.9	44.5	31.9	36.8	37.2	28.7	26.7
Kendrapara	72.7	2.7	3.8	69.5	85.1	75.9	60.3	57.6	50.0	40.6	28.6	31.7
Kendujhar	81.0	2.7	6.7	36.5	56.6	53.3	54.9	42.6	66.1	44.8	21.5	21.7
Khordha	87.5	0.3	8.0	76.6	92.1	90.5	83.4	77.5	73.9	63.1	41.3	38.6
Koraput *	70.2	16.7	4.2	34.9	47.8	50.9	37.2	29.5				
Malkangiri	81.2	5.8	5.3	24.9	69.8	57.0	65.0	52.1	60.7	44.3	27.3	38.5
Mayurbhanj	93.5	7.5	1.6	31.0	64.0	57.1	50.0	31.4	44.32	35.84	26.16	38.51
Nabarangapur	69.9	17.2	3.2	20.1	67.7	63.3	39.3	29.9	63.1	46.2	17.5	41.7
Nayagarh	81.6	4.4	8.5	61.7	72.7	69.7	63.6	55.1	64.5	46.7	20.7	34.0
Nuapada	96.6	4.9	3.9	22.7	61.4	55.3	44.5	37.5	60.4	54.4	44.9	45.6
Puri	87.6	1.6	5.4	72.1	90.4	84.3	81.9	70.5	66.7	49.2	28.7	70.5
Rayagada	87.9	6.6	4.0	39.3	57.3	55.3	54.8	55.7	64.3	44.8	32.0	32.3
Sambalpur	97.3	4.1	8.6	37.0	81.8	84.0	57.0	37.0	39.2	39.4	6.3	41.1
Sonapur	88.1	0.6	1.0	41.7	80.2	79.7	51.5	43.1	57.7	51.3	32.5	37.0
Sundargarh	69.2	3.6	11.7	38.4	71.4	70.0	44.0	35.7	47.7	57.7	21.7	38.8
Total	85.2	4.5	5.4	52.5	76.1	71.9	61.4	52.1	63.2	50.0	30.7	36.5

* Blank cells indicate insufficient data.

AS PART OF ASER 2007, 2009 AND 2010, IN EACH SAMPLED VILLAGE, ONE GOVERNMENT SCHOOL WITH PRIMARY SECTIONS WAS VISITED ON THE DAY OF THE SURVEY. THE SCHOOL INFORMATION IS BASED ON THIS VISIT.

SCHOOL OBSERVATIONS

TABLE 9: TOTAL SCHOOLS VISITED

	2007	2009	2010
TYPE OF SCHOOL			
Std I-IV/V : PRIMARY	406	403	383
Std I-VII/VIII: PRIMARY + UPPER PRIMARY	306	344	358
TOTAL SCHOOLS VISITED	712	747	741

TABLE 11: HEADTEACHERS 2010

	Std I-IV/V	Std I-VII/VIII
NO HEADTEACHER APPOINTED	5.8	8.1
HEADTEACHER APPOINTED BUT NOT PRESENT ON DAY OF VISIT	6.2	10.8
HEADTEACHER APPOINTED & PRESENT ON DAY OF VISIT	88.0	81.2
TOTAL	100.0	100.0

TABLE 13: COMPUTERS 2010

% SCHOOLS WITH	Std I-IV/V	Std I-VII/VIII
NO COMPUTERS	97.5	88.0
COMPUTERS BUT NO CHILDREN USING THEM AT TIME OF VISIT	1.7	3.8
COMPUTERS AND CHILDREN USING THEM AT TIME OF VISIT	0.8	8.2
TOTAL	100.0	100.0

TABLE 10: TEACHER ATTENDANCE

	2007	2009	2010	2007	2009	2010
TYPE OF SCHOOL	Std I-IV/V			Std I-VII/VIII		
% TEACHERS PRESENT (AVERAGE)	91.1	92.3	89.1	87.2	90.4	83.8
% SCHOOLS WITH NO TEACHER PRESENT	0.4	0.0	1.3	0.0	0.4	0.7
% SCHOOLS WITH ALL TEACHERS PRESENT	77.9	80.1	74.3	62.3	71.1	56.0

TABLE 12: STUDENT ATTENDANCE

	2007	2009	2010	2007	2009	2010
TYPE OF SCHOOL	Std I-IV/V			Std I-VII/VIII		
% ENROLLED CHILDREN PRESENT (AVERAGE)	72.4	74.1	71.9	70.1	73.0	72.3
% SCHOOLS WITH LESS THAN 50% ENROLLED CHILDREN PRESENT	12.9	8.3	11.9	13.2	9.1	9.6
% SCHOOLS WITH 75% OR MORE ENROLLED CHILDREN PRESENT	51.6	54.8	51.5	44.7	50.5	51.4

TABLE 14: MULTIGRADE CLASSES

	2007	2009	2010	2007	2009	2010
% SCHOOLS IN WHICH	Std I-IV/V			Std I-VII/VIII		
Std II CHILDREN SITTING WITH ONE OR MORE OTHER CLASSES	72.1	70.8	77.0	65.1	71.9	69.4
Std IV CHILDREN SITTING WITH ONE OR MORE OTHER CLASSES	59.1	64.9	66.8	48.8	62.4	58.1

SCHOOL GRANTS

TABLE 15: SSA SCHOOL GRANTS RECEIVED IN FIRST HALF OF FINANCIAL YEAR 2009-10 AND IN THE FULL FINANCIAL YEAR 2009-2010. PRIMARY SCHOOLS ONLY

SSA school grants to government primary schools only	April 2009-October 2009			April 2009-March 2010				
	No. of schools	% Schools reporting grant information			No. of schools	% Schools reporting grant information		
		Got grant	Did not get grant	Don't know		Got grant	Did not get grant	Don't know
MAINTENANCE GRANT	282	49.7	30.5	19.9	339	85.6	5.0	9.4
DEVELOPMENT GRANT	278	56.5	25.9	17.6	307	86.3	4.2	9.5
TEACHER GRANT (TLM)	280	75.4	12.9	11.8	322	91.9	2.8	5.3

TABLE 16: SSA SCHOOL GRANTS RECEIVED IN FULL FINANCIAL YEAR 2008-2009 AND FULL FINANCIAL YEAR 2009-2010. PRIMARY SCHOOLS ONLY

SSA school grants to government primary schools only	April 2008-March 2009			April 2009-March 2010				
	No. of schools	% Schools reporting grant information			No. of schools	% Schools reporting grant information		
		Got grant	Did not get grant	Don't know		Got grant	Did not get grant	Don't know
MAINTENANCE GRANT	335	61.2	23.0	15.8	339	85.6	5.0	9.4
DEVELOPMENT GRANT	334	67.4	17.1	15.6	307	86.3	4.2	9.5
TEACHER GRANT (TLM)	334	84.7	6.3	9.0	322	91.9	2.8	5.3

NOTE: Table 15 compares grants received in the first half of the financial year (from April to October 2009) with grants received through the full financial year (from April 2009 to March 2010). Table 16 compares fund flows to schools across two full financial years. This table tracks fund flows to schools over time. Data reported is only for Primary schools. Data on Primary and Upper Primary Schools will be made available in the forthcoming PAISA 2010 report.

RIGHT TO EDUCATION INDICATORS

TABLE 17: SCHOOLS BY ENROLLMENT 2010

School enrollment	Number of schools	% of schools
1-60	155	21.4
61-90	120	16.6
91-120	111	15.3
> 120	339	46.8
TOTAL	725	100.0

TABLE 18: PUPIL TO TEACHER RATIO COMPARED TO RTE NORMS 2010

School enrollment	Number of teachers							Total
	1	2	3	4	5	6	≥7	
1-60	60.4	30.2			9.4			100
61-90		73.3	19.8		7.0			100
91-120			79.8	14.6		5.6		100
> 120				59.2	14.9	26.0		100

How to read this table: For example, RTE norms state that a school with enrollment of 61-90 students should have 3 teachers. This table shows that for schools in this category, 19.8% of schools are at norm (i.e. have 3 teachers), 73.3% are below the norm and 7% are above the norm.

TABLE 19: SCHOOLS BY NUMBER OF TEACHERS 2010

Number of teachers	Number of schools	% of schools
1	121	22.6
2	131	24.4
3	93	17.4
4	75	14.0
5	45	8.4
6	37	6.9
≥7	34	6.3
TOTAL	536	100.0

TABLE 20: TEACHER TO CLASSROOM RATIO COMPARED TO RTE NORMS 2010

Number of Teachers	Number of classrooms							Total	
	0	1	2	3	4	5	6		≥7
1	9.2	13.9			76.9				100
2		25.0	29.7		45.3				100
3			32.0	20.0		48.0			100
4				29.4	17.7		52.9		100
5					38.9	22.2	38.9		100
6						40.0	25.0	35.0	100
≥7								38.9	61.1

How to read this table: RTE norms indicate that there should be one classroom for every teacher. This table shows, for example, that for schools with 3 teachers, 20% of schools are at norm (i.e. have 3 classrooms), 32% are below the norm and 48% are above the norm.

TABLE 21: FACILITIES COMPARED TO RTE NORMS 2010

% of schools with		
BUILDING	Office/Store/Office cum store	74.6
	Playground	44.5
	Boundary wall	40.7
DRINKING WATER	No facility for drinking water	15.2
	Facility but no drinking water available	14.5
TOILET	Drinking water available	70.3
	No toilet facility	15.5
	Facility but toilet not useable	33.6
GIRLS TOILET	Toilet useable	50.9
	% Schools with no separate provision for girls toilets	30.3
	Of schools with separate girls toilets, % schools where	
	Toilet locked	20.0
TLM	Toilet not useable	10.3
	Toilet useable	39.4
	Teaching learning material in Std 2	81.3
LIBRARY	Teaching learning material in Std 4	76.9
	No library	34.7
	Library but no books being used by children on day of visit	18.5
MDM	Library books being used by children on day of visit	46.8
	Kitchen shed for cooking midday meal	74.3
	Midday meal served in school on day of visit	88.6

NOTE: School observations for ASER 2010 looked at TLM for Std II and Std IV only.

As part of ASER 2010, in each sampled village, one government school with primary sections was visited on the day of the survey. During this school visit, RTE indicators were observed and are reported here.

Extracts from the Schedule of The Right of Children to Free and Compulsory Education Act 2009 Norms and standards for a School (Sections 19 and 25)

NUMBER OF TEACHERS IN Std 1-5:

♦ Admitted children	No. of teachers
≤ 60	2
61-90	3
91-120	4
121-200	5
> 150	5 + 1 Headteacher
> 200	Pupil-Teacher Ratio (excluding Headteacher) shall not exceed 40

SCHOOL FACILITIES:

All weather building with:

- ♦ At least one classroom for every teacher
- ♦ Office cum store cum headteacher's room
- ♦ Separate toilets for boys and girls
- ♦ Safe and adequate drinking water facility to all children
- ♦ A kitchen where mid-day meal is cooked in the school
- ♦ Playground
- ♦ Arrangements for securing the school building by boundary wall or fencing.

TEACHING LEARNING EQUIPMENT

shall be provided to each class as required.

LIBRARY

There shall be a library in each school providing newspaper, magazines and books on all subjects, including story-books.

